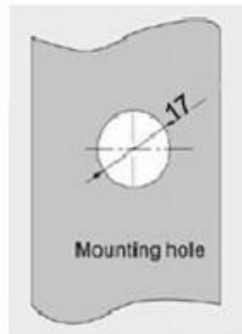
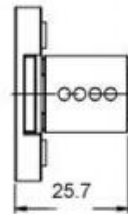
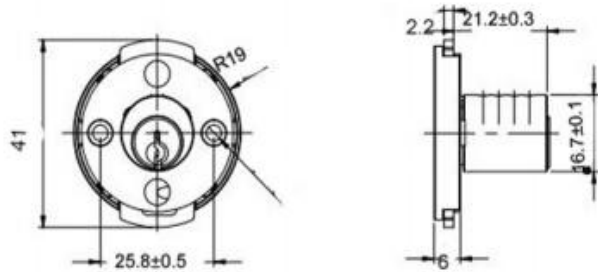


Brass Vending Machine Lock MK213



Material	Zinc alloy
Finished	Bright chrome, nickel
Key Combination	Over 10,000
Applications	Vending/game machine, locker, ATM machine, metal cabinet, safety box, etc.
Speciality	<ol style="list-style-type: none"> 1. According to different security purpose, there are optional plunger with tubular key, dimple key and disc tumbler system. 2. L Pop-out handle operation convenient. 3. Include 11 pin tumbler plug for added security. 4. Customer-oriented development available.