

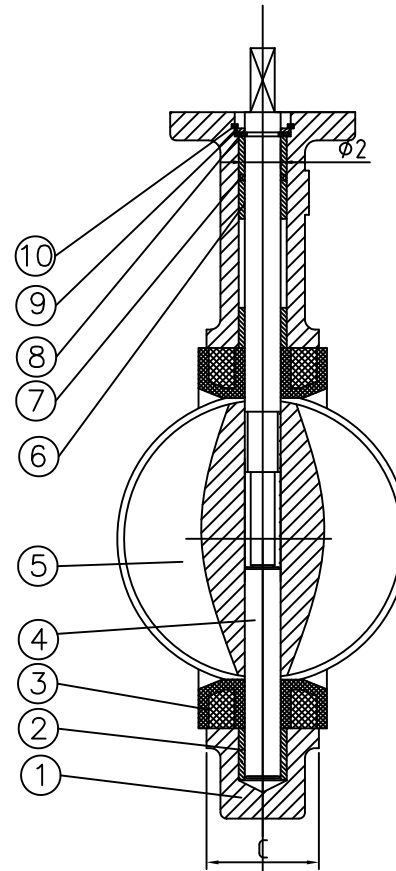
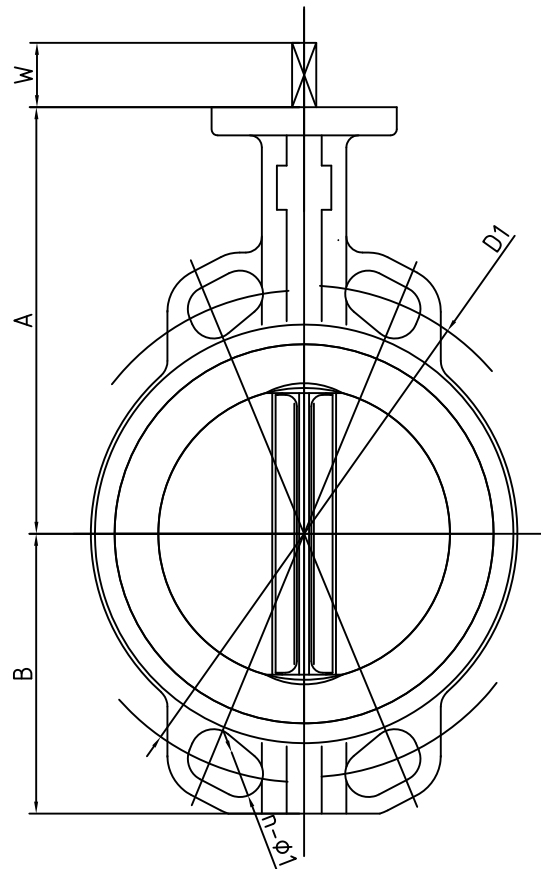
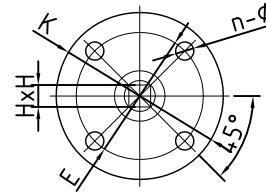
SIZE	A	B	C	φ2	ISO5211	K	E	n-φ	D1	n-φ1	HXH	W
6"150LB	212	139	56	18.92	F07	90	70	4-10	24.13	8-23	14X14	17

PO ITEM: 06

VALVE CODE: VB0C0061W4C1I3B

Performance Standard		
Nominal CL (PN)	150LB	Test medium
Shell test pressure	2.0MPa	Water
Seal test pressure	1.6MPa	
Air test pressure	-	Air
Suitable temperature	-29~110℃	
Suitable medium	Water/Steam/Oil etc	

TOP FLANGE



Torque 143N.M at 1000kpa.

Bosseal Valves

10	Snap Spring	SK7	
9	Gasket	Stainless Steel	
8	Half Ring	Stainless Steel	
7	O-ring	NBR	
6	Up Bushing	FRP	
5	Disc	5A	
4	Shaft	ASTM A182 F53	
3	Liner(Seat)	BUNA-N	
2	Long Bushing	FRP	
1	Body	WCB	
NO.	PARTS NAME	MATERIAL	REMARK

CONCENTRIC BUTTERFLY VALVE-Wafer

Size	6"	Design&Manu	API 609 A
Class	150Lb	Inspection&Test	API 598
Rev.	00	End Connection	ASME B16.5 RF
Man.Fig.		Face-to-face dimension	API 609 A

Bosseal Valve(Suzhou) Co., Ltd