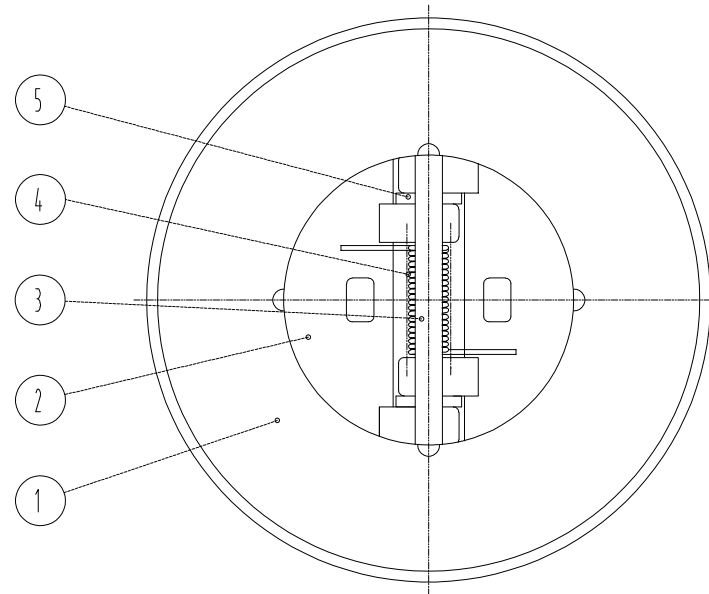
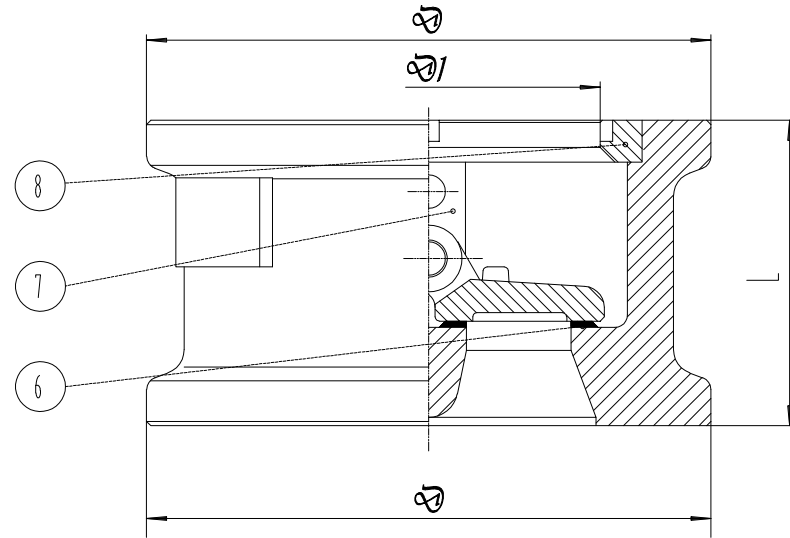


VALVE SIZE	DIMENSION mm.		
	L	D	D1
4"-300LB	73	179	108

Performance Standard		
Nominal CL (PN)	300LB	Test medium
Shell test pressure	7.5MPa	Water
Seal test pressure	5.5MPa	
Air test pressure	- MPa	Air
Suitable temperature	-29~120°C	
Suitable medium	Water/Steam/Oil etc	



8	Cap	ASTM A351 CF8M	
7	Pin Holder	ASTM A351 CF8M	
6	Seat	Integral Material	
5	Bearing	ASTM A276 316	
4	Spring	INCONEL X-750	
3	Pin	ASTM A276 316	
2	Plate	ASTM A351 CF8M	
1	Body	ASTM A351 CF8M	
NO.	PARTS NAME	MATERIAL	REMARK

Wafer Type Dual Plate Check Valve

Size	4"	Design&Manu	API 594
Class	300Lb	Inspection&Test	API 598
Rev.	00	End Connection	ASME B16.5
Man.Fig.		Face-to-face dimension	API 594

Bosseal Valves

Bosseal Valve(Suzhou) Co., Ltd