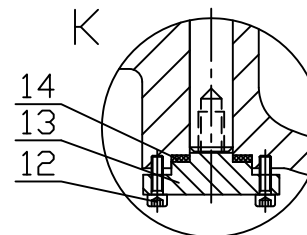
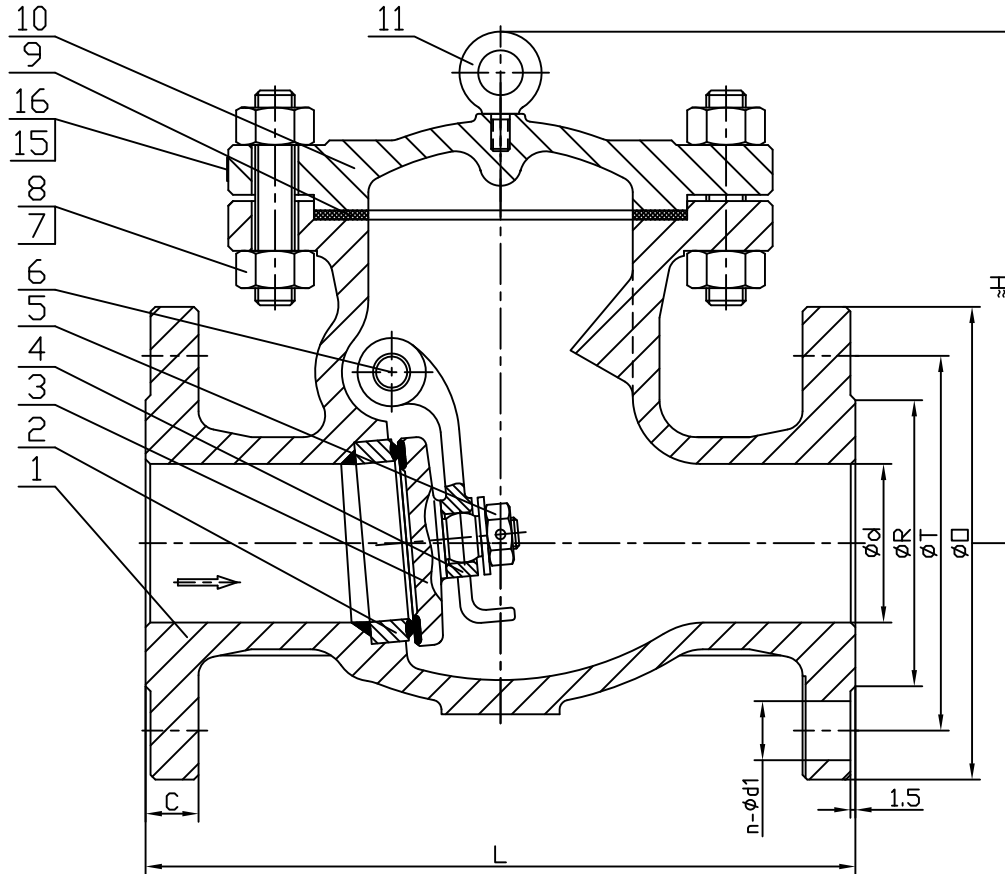


ITEM	SIZE	$\phi d$	$\phi R$	$\phi T$	$\phi O$	$n-\phi d1$	C	L	H	WT(Kg)
	24"	591	692.2	749.3	813	20- $\phi 35$	47.5	1295	755	960

Performance Standard		
Nominal CL (PN)	150LB	Test medium
Shell test pressure	3.0MPa	Water
Seal test pressure	2.2MPa	
Air test pressure	/ MPa	Air
Suitable temperature	-10~400°C	
Suitable medium	Water/Steam/Oil etc	



ITEM	PART NAME	MATERIAL	NOTES
1	Body	ASTM A216 GR.WCB	
2	Seat Ring	ASTM A105N+STL#6	
3	Disc	ASTM A105N+13Cr	
4	Hinge	ASTM A216 GR.WCB	
5	Disc Nut	Stainless Steel	
6	Hinge Pin	ASTM A182 GR F6a	
7	Stud	ASTM A193 GR.B7	
8	Nut	ASTM A194 GR.2H	
9	Gasket	SPW SS304+Graphite	
10	Bonnet	ASTM A216 GR.WCB	
11	Eyebolt	Carbon Steel	
12	Screw	ASTM A29 Type 1035	
13	Cover Plate	ASTM A29 Type 1020	
14	Gasket	SPW SS316+Graphite	
15	Nameplate	SS316	
16	Rivet	SS316	

Swing Check Valve

Size	24"	Design&Manu	BS1868
Class	150Lb	Inspection&Test	API 598
Rev.	00	End Connection	ASME B16.5
Man.Fig.		Face-to-face dimension	ASME B16.10

Bosseal Valve(Suzhou) Co., Ltd