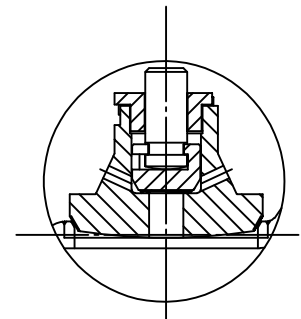


NPS >10



NPS >8

Completed with double disc

Nominal Diameter		Main Dimension mm class600									
inch	mm	d	D	D1	D2	b	n-φd	L	Hopen	W	
2"	50	51	165	127.0	92	26	8-φ19	292	356	280	
2 1/2"	65	64	190	149.2	105	29	8-φ22	330	406	300	
3"	80	76	210	168.3	127	32	8-φ22	356	452	350	
4"	100	102	275	215.9	157	38	8-φ26	432	548	450	
6"	150	152	356	292.1	216	48	12-φ29	559	788	500	
8"	200	200	420	349.2	270	56	12-φ32	660	862	600	
10"	250	248	510	431.8	324	64	16-φ35	787	936	530	
12"	300	298	560	489.0	381	67	20-φ35	838	931	530	
14"	350	327	605	527.0	413	70	20-φ38	889	926	530	
16"	400	375	686	603.2	470	77	20-φ41	991	1122	530	
18"	450	419	745	654.0	533	83	20-φ45	1092		600	
20"	500	464	815	723.9	584	89	24-φ45	1194	1199	600	
24"	600	559	940	838.2	692	102	24-φ51	1397		600	

18	Gear Box	Ductile Iron	
17	Handwheel	Ductile Iron	
16	Stem Nut	A439 D2	
15	Gland Flange	ASTM A216 WCB	
14	Gland Nut	ASTM A194 2HM	
13	Gland Eyebolt	ASTM A193 B7M	
12	Gland	ASTM A182 F6a	
11	Stem Packing	Graphite	
10	Bonnet Nut	ASTM A194 2HM	
9	Bonnet Bolt	ASTM A193 B7M	
8	Bonnet	ASTM A216 WCB	
7	Backseat bushing	ASTM A182 F6a	
6	Gasket	Graphite+304	
5	Stem	ASTM A182 F6a	
4	Disc Nut	ASTM A182 F6a	
3	Disc	A216 WCB+13Cr	
2	Seat Ring	ASTM A105+STL	
1	Body	ASTM A216 WCB	
NO	PART NAME	MATERIAL	REMARKS

GLOBE VALVE CLASS600

Design and Manufacture	BS 1873
Face to Face Dimensions	ANSI B16.10
Flange Ends Dimensions	ANSI B16.5
Pressure Test	API 598

Bosseal Valve(Suzhou) Co.,Ltd.

