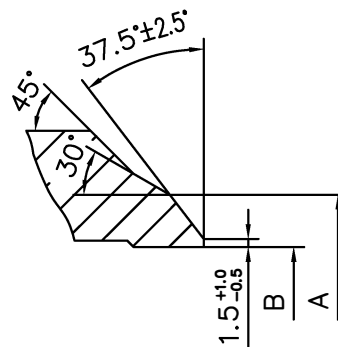
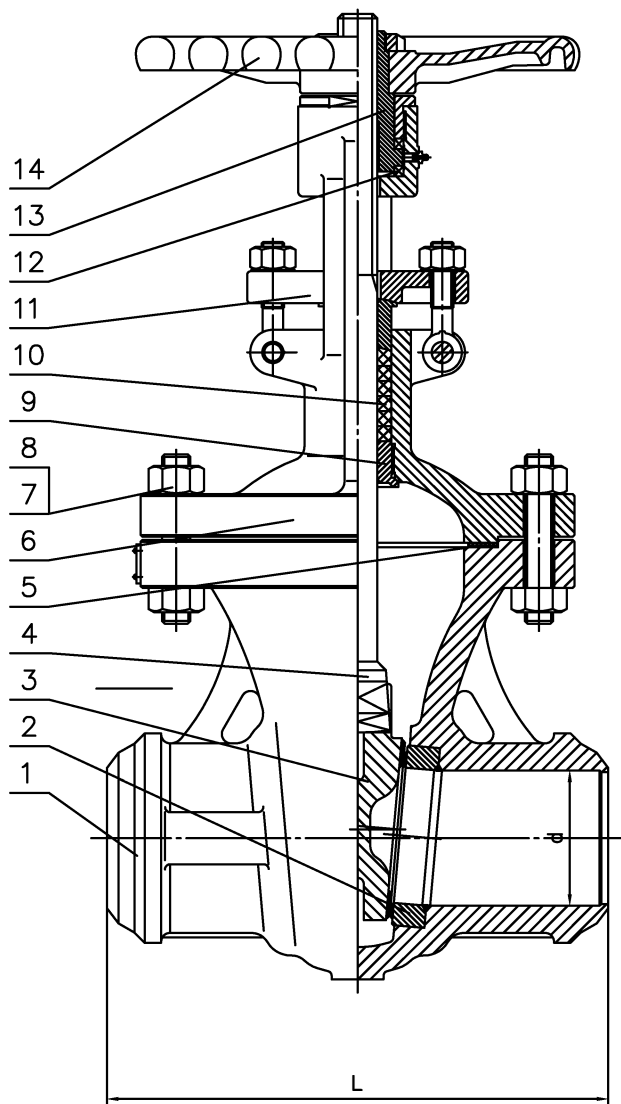


Specification Standard Sheet		
Shell Test Pressure	7.67	MPa
High Pressure Seal Test	5.6	
Back Seat Seal Pressure Test	5.6	
Low Pressure Seal Test	0.6	
Suitable Temperature	-10~400°C	
Suitable Medium	Water·Steam·Oil etc	

Nominal Diameter		Main Dimension (mm)				
inch	mm	d	A	B	L	SCH
8"	200	200	223		419	40

MODEL NO.:
8G3BWCB08



Butt-Weld End Amplification

14	Hand Wheel	ASTM A536 60-40-18	
13	Stem Nut	Copper Alloy	
12	Plane Bearing	ASTM A295 52100	
11	Gland Flange	Carbon Steel	
10	Stem Packing	Flexible Graphite	
9	Backseat Bushing	ASTM A276 420	
8	Bonnet Nut	ASTM A194 2H	
7	Bonnet Bolt	ASTM A193 B7	
6	Bonnet	ASTM A216 WCB	
5	Winded Gasket	Graphite+SS304	
4	Stem	ASTM A182 F6a	
3	Flexible Wedge	ASTM A216 WCB+13Cr	
2	Seat Ring	ASTM A105+STL	
1	Body	ASTM A216 WCB	
No	Parts Name	Parts Material	Remarks

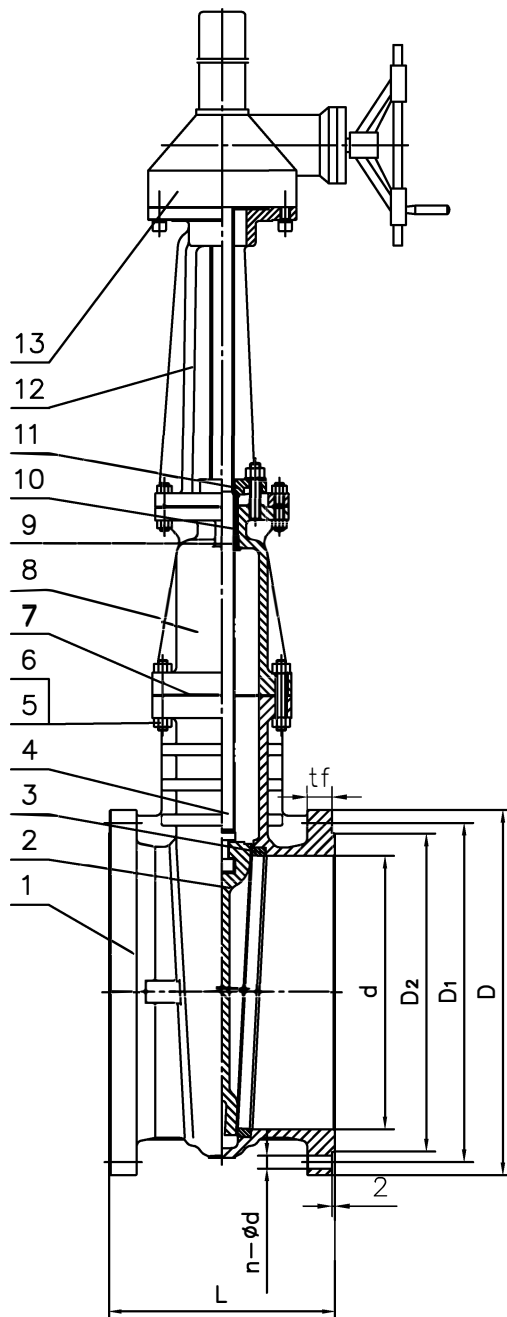
GATE VALVE CLASS300 BW

Temperature and Pressure	ASME B16.34
Design and Manufacture	API 600 B16.34
Face to Face Dimensions	ASME B16.10
Butt-Weld (BW) Ends Dimensions	ASME B16.25
Inspection and Test	API 598

Bosseal Valve(Suzhou) Co., Ltd

Specification Standard Sheet		
Shell Test Pressure	2.94	MPa
High Pressure Seal Test	2.16	
Back Seat Seal Pressure Test	2.16	
Low Pressure Seal Test	0.6	
Suitable Temperature	-10~400°C	
Suitable Medium	Water·Steam·Oil etc	

Nominal Diameter		Main Dimension (mm)						
inch	mm	d	D	D1	D2	tf	n- ϕ d	L
18"	450	435	635	577.9	533.4	38.1	16- ϕ 32	432



MODEL NO.: 18G1RWCB08

13	Gear Actuator		
12	Yoke	ASTM A216 WCB	
11	Gland Flange	Carbon Steel	
10	Stem Packing	Flexible Graphite	
9	Backseat Bushing	ASTM A276 420	
8	Bonnet	ASTM A216 WCB	
7	Wrapping Gasket	Graphite+SS304	
6	Bonnet Nut	ASTM A194 2H	
5	Bonnet Bolt	ASTM A193 B7	
4	Stem	ASTM A182 F6a	
3	Seat Ring	ASTM A105+STL	
2	Flexible Wedge	ASTM A216 WCB+13Cr	
1	Body	ASTM A216 WCB	
No	Parts Name	Parts Material	Remarks

GATE VALVE CLASS150 RF

Temperature and Pressure	ASME B16.34
Design and Manufacture	API 600 B16.34
Face to Face Dimensions	ASME B16.10
Flanged Fittings Dimensions	ASME B16.5(TABLE 9)
Inspection and Test	API 600

SUZHOU SUNCO VALVE CO.,LTD