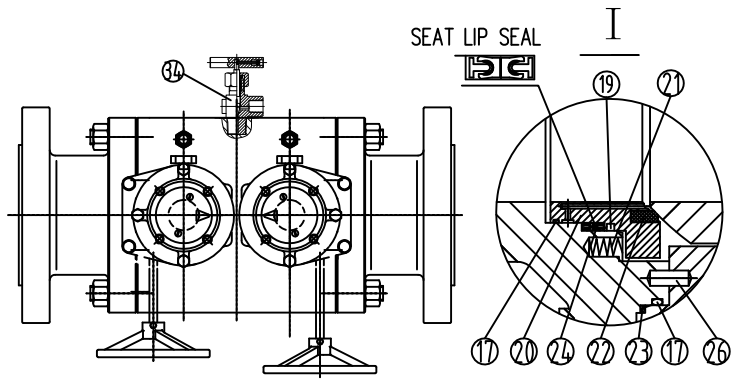
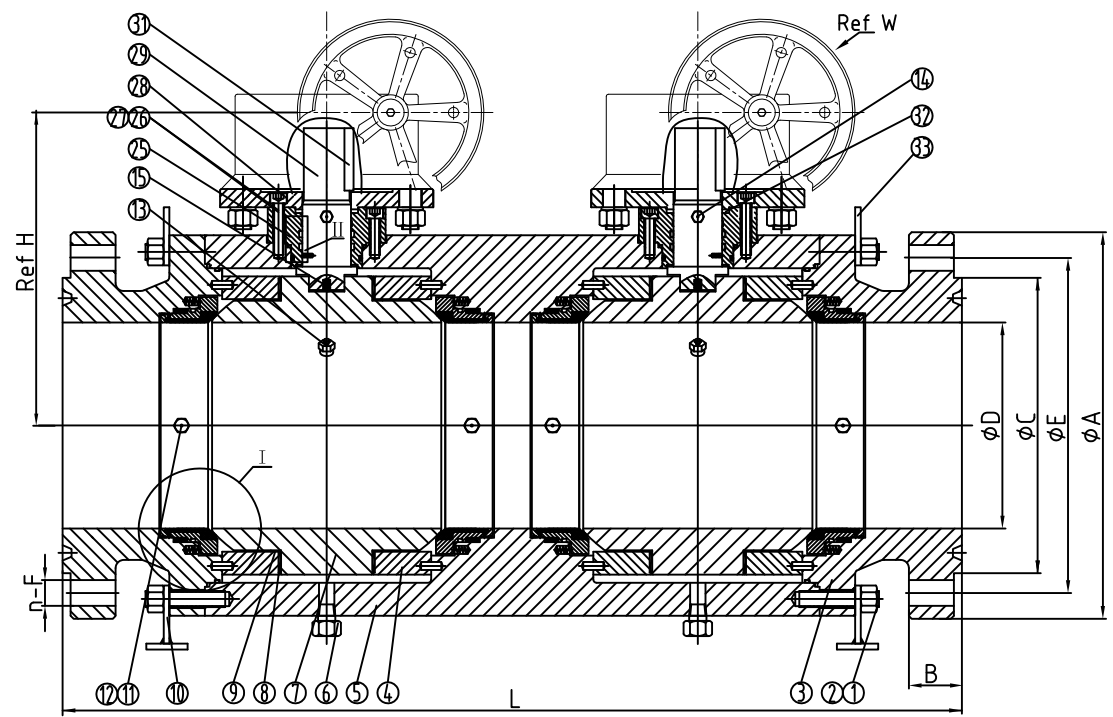


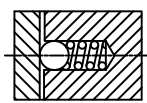
VALVE SIZE	DIMENSION IN mm.										Flange Groove No.
	A	B	C	d (Min)	E	f	REF W	REF H	L	n-ØF	
6"-1500LB	395	82.6	248	144	317.5	9.53	600	330	1120	12-Ø38.1	R46

NOTES:  
1. DIB-1 SEAT

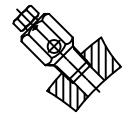
Performance Standard		
Nominal CL (PN)	1500LB	Test medium
Shell test pressure	38.5MPa	Water
Seal test pressure	27.5MPa	
Air test pressure	0.6MPa	Air
Suitable temperature	-29~120°C	
Suitable medium	Water/Steam/Oil etc	



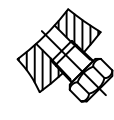
ANTISTATIC DEVICE



Vent Valve



DRAIN PLUG



34	NEEDLE VALVE	C.S.	
33	LIFTING LUGS	C.S.	
32	PACKING	GRAPHITE	
31	KEY	C.S.	
29	STEM	ASTM A182 F51	
28	TOP FLANGE	ASTM A350 LF2 CL.1	
27	SCREW	ASTM A320 L7	
26	ALIGNMENT PIN	C.S.	
25	PACKING BOX	ASTM A350 LF2 CL.1	
24	LIP SEAL	PTFE+UNS R30003	
23	BODY GASKET	SS304+GRAPHITE	
22	SEAT INSERT	PEEK	
21	SEAT SPRING	INCONEL X-750	
20	SEAT RING	ASTM A182 F51	
19	SEAT FIRESAFE PACKING	CARBON FIBRE GRAPHITE	
18	GASKET	GRAPHITE	
17	O-RING+BACK UP	VITON-AED+PTFE	
16	ANTISTATIC BALL	S.S316	
15	ANTISTATIC SPRING	S.S316	
14	STEM INJECTION	C.S	
13	VENT VALVE	C.S	
12	CHECK VALVE	S.S304	
11	SEAT INJECTION	C.S	
10	SUPPORTING FEET	C.S.	
9	WASHER	C.S.+PTFE	
8	BEARING	C.S.+PTFE	
7	BALL	ASTM A182 F316+Cr	
6	DRAIN PLUG	C.S	
5	BODY	ASTM A350 LF2 CL.1	
4	TRUNNION SUPPORT	ASTM A350 LF2 CL.1	
3	ADAPTER	ASTM A350 LF2 CL.1	
2	BODY NUT	ASTM A194 7	
1	BODY STUD	ASTM A320 L7	
NO.	PARTS NAME	MATERIAL	REMARK

Double Ball Ball Valve

Size	6"	Design&Manu	API 6D
Class	1500Lb	Inspection&Test	API 598
Rev.	01	End Connection	ASME B16.5
Man.Fig.		Face-to-face dimension	MFG'S

**Bosseal** Valves

Bosseal Valve(Suzhou) Co., Ltd