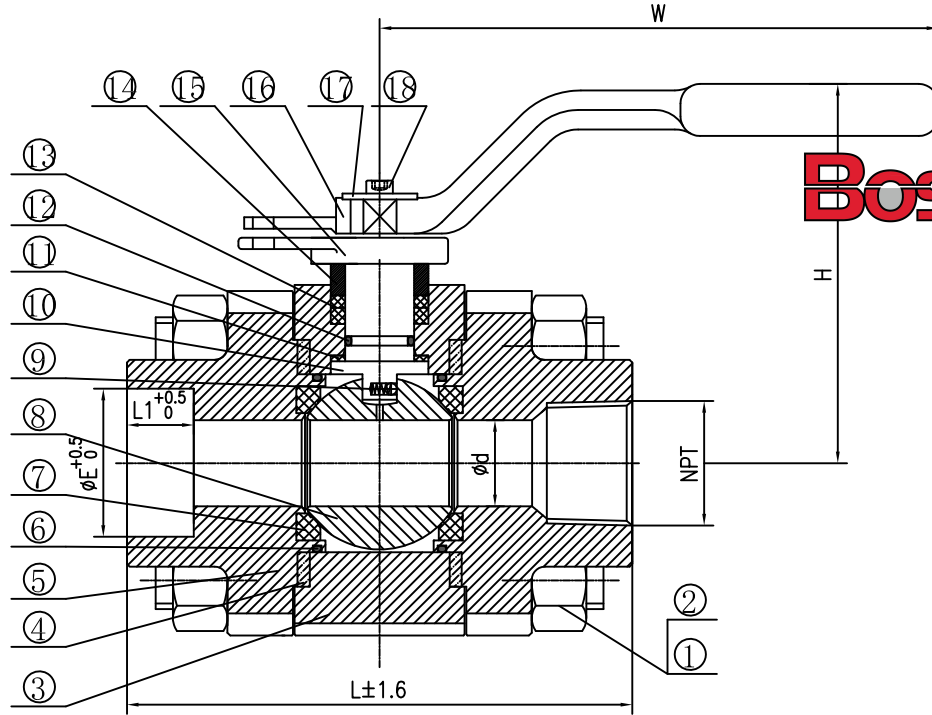


1500	1"×3/4"	128	1"	33.9	13	19	265	110	13
1500	3/4"×1/2"	113	3/4"	27.2	13	13	210	95	8
CLASS	NPS	L	NPS	E	L1	d	W	H	Weight/Kg

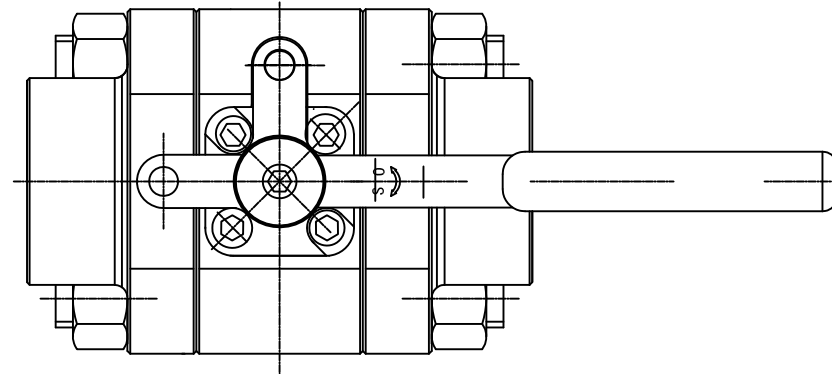
Performance Standard		
Nominal CL (PN)	1500LB	Test medium
Shell test pressure	37.5MPa	Water
Seal test pressure	27.5MPa	
Air test pressure	0.6MPa	Air
Suitable temperature	-45~150℃	
Suitable medium	Water/Steam/Oil etc	



**Bosseal** Valves

18	Socket head bolts	SS	
17	Flat pad	C.S	
16	The handle	ASTM A216 WCB	
15	Gland Flange	ASTM A352 LCB	
14	Gland	ASTM A276 316	
13	Packing	Graphite	
12	O ring	Viton GLT AED	
11	Thrust pad	RPTFE	
10	Stem	17-4PH	
9	Antistatic Spring	SS	
8	Ball	ASTM A182 F316	
7	Seat Ring	PEEK	
6	O ring	Viton GLT AED	
5	Bonnet	ASTM A350 LF2	
4	Gasket	SS316+Graphite	
3	Body	ASTM A350 LF2	
2	Hex.Nut	ASTM A194 7L	
1	Hex. Bolt	ASTM A320 L7	
NO.	PARTS NAME	MATERIAL	REMARK

Item No.	TAG No.	Item No.	Spec
18	V94077	18	V94159
	V94090		V9XXXV
	V94139		V94237
	V94141		V94261
	V94144		V9XXXB
	V94149		V9XXXM
	V94150	17	V94215
	V94152		V9XXXP
	V94155		V9XXXT
	V94157		V9XXXZ
SPEC		VBA5206	



Floating Ball Valve			
Size	0.75,1"	Design&Manu	API 608
Class	1500Lb	Inspection&Test	API 598
Rev.	00	End Connection	ASME B1.20.1&ASME B16.11
Man.Fig.		Face-to-face dimension	MFG'S

Bosseal Valve(Suzhou) Co., Ltd