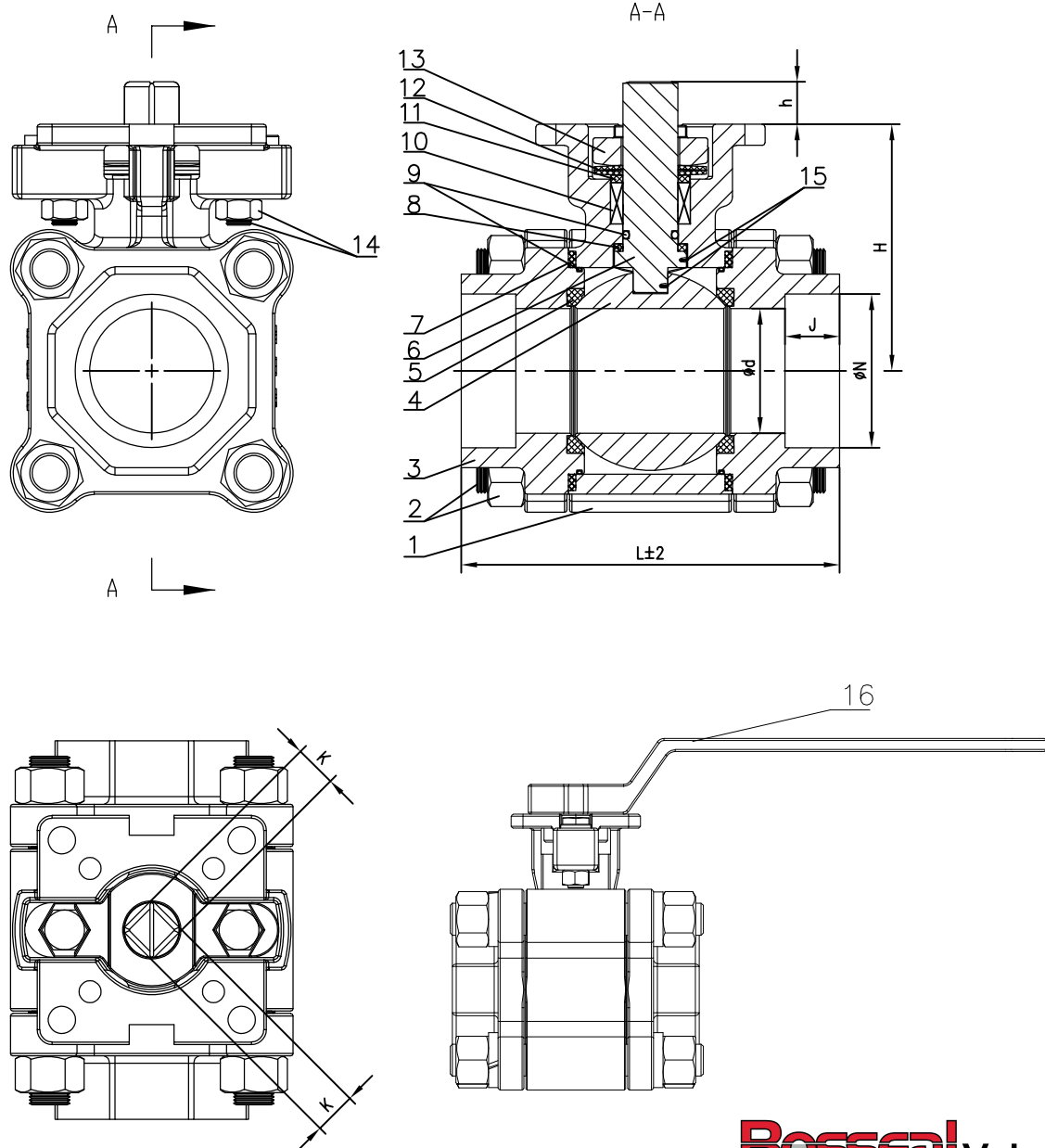


Performance Standard		
Nominal CL (PN)	800LB	Test medium
Shell test pressure	19.5MPa	Water
Seal test pressure	14.3MPa	
Air test pressure	0.6MPa	Air
Suitable temperature	-29~120°C	
Suitable medium	Water/Oil/Natural Gas etc	



16	Lever	SS	
15	Anti-static	SS316	
14	Hex Screw	A193 B8M+PTFE	
13	Gland	A351 CF3M	
12	Spring	SS304	
11	Packing Ring	F304	
10	Packing	Graphite	
9	O-ring	Viton	
8	Thrust Washer	RPTFE	
7	Gasket	SS316+Graphite	
6	Stem	A182 F51	
5	Seat	RPTFE	
4	Ball	A182 F51	
3	End Cap	A995 4A	
2	Bolts&Nuts	B8M/8M+PTFE	
1	Body	A995 4A	

NO.	PARTS NAME	MATERIAL	REMARK
Floating Ball Valve			
Size	1/2"	Design&Manu	API 608
Class	800Lb	Inspection&Test	API 598
Rev.	00	End Connection	ASME B16.11-SW
Man.Fig.		Face-to-face dimension	MFG'S

Bosseal Valves

Bosseal Valve(Suzhou) Co., Ltd