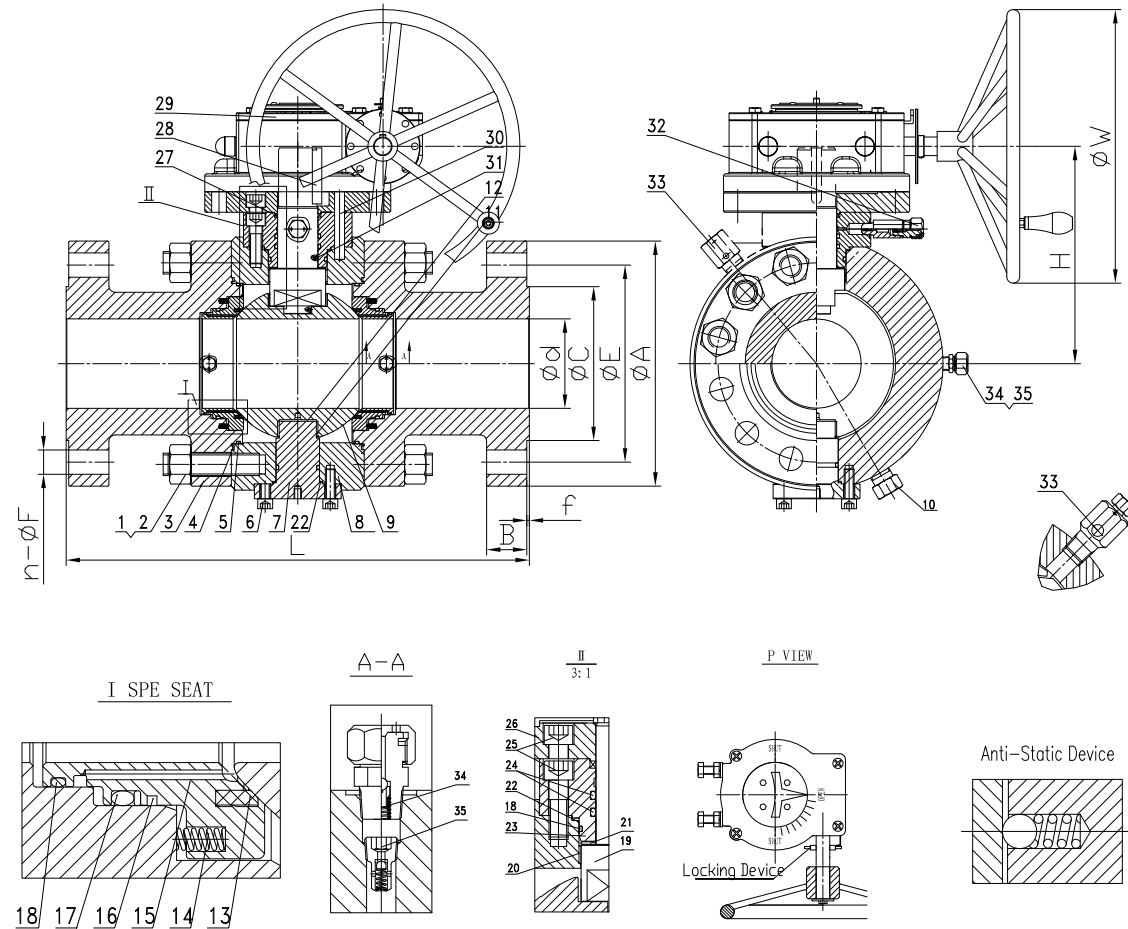


VALVE SIZE	DIMENSION IN mm.										WEIGHT KG
	A	B	C	Min d	E	f	ReF W	Ref H	L	n-ØF	
4"-900LB	292	44.5	157.2	100	235	6.4	350	220	457	8-Ø32	168

Performance Standard		
Nominal CL (PN)	900LB	Test medium
Shell test pressure	22.5MPa	Water
Seal test pressure	17.5MPa	
Air test pressure	0.6MPa	Air
Suitable temperature	-45~150℃	
Suitable medium	Water/Steam/Oil etc	



35	CHECK VALVE	S.S.316	
34	SEAT INJECTION	SS316	
33	VENT	SS316	
32	STEM INJECTION	SS316	
31	ANTISTATIC DEVICE	S.S.316	
30	ALIGNMENT PIN	C.S.	
29	WORM	ASSEMBLY	
28	KEY	C.S.	
27	GASKET	GRAPHITE	
26	TOP FLANGE	ASTM A350 LF2 CL.1	
25	BOLT	ASTM A320 L7	
24	STEM O-RING	VITON-GLT-AED	
23	PACKING BOX	ASTM A350 LF2 CL.1	
22	GASKET	GRAPHITE	
21	WASHER	PTFE	
20	BEARING	C.S.+PTFE	
19	STEM	ASTM A182 F316	
18	O-RING	VITON-GLT-AED	
17	SEAT O-RING+BACK UP	VITON-GLT-AED+PTFE	
16	SEAT FIRESAFE PACKING	CARBON FIBRE GRAPHITE	
15	SEAT RING	ASTM A182 F316	
14	SEAT SPRING	INCONEL X-750	
13	SEAT INSERT	PEEK	
12	WASHER	PTFE	
11	BEARING	C.S.+PTFE	
10	DRAIN	SS316	
9	BALL	ASTM A182 F316+0.025ENP	
8	BODY	ASTM A350 LF2 CL.1	
7	TRUNNION SHAFT	ASTM A350 LF2 CL.1	
6	BOLT	ASTM A320 L7	
5	BODY O-RING	VITON-GLT-AED	
4	GASKET	GRAPHITE+316S.S.	
3	BONNET	ASTM A350 LF2 CL.1	
2	BODY NUT	ASTM A194 7L	
1	BODY STUD	ASTM A320 L7	
NO.	PARTS NAME	MATERIAL	REMARK

Item No.	TAG No.	Spec
23	V94137	VBA9203
	V94153	
	V94160	
	V94224	
	V9XXXA	
	V9XX XK	
	V9XX XL	

Bosseal Valves

Trunnion Ball Valve			
Size	4"	Design&Manu	API 6D
Class	900Lb	Inspection&Test	API 6D
Rev.	00	End Connection	ASME B16.5
Man.Fig.		Face-to-face dimension	ASME B16.10

Bosseal Valve(Suzhou) Co., Ltd