

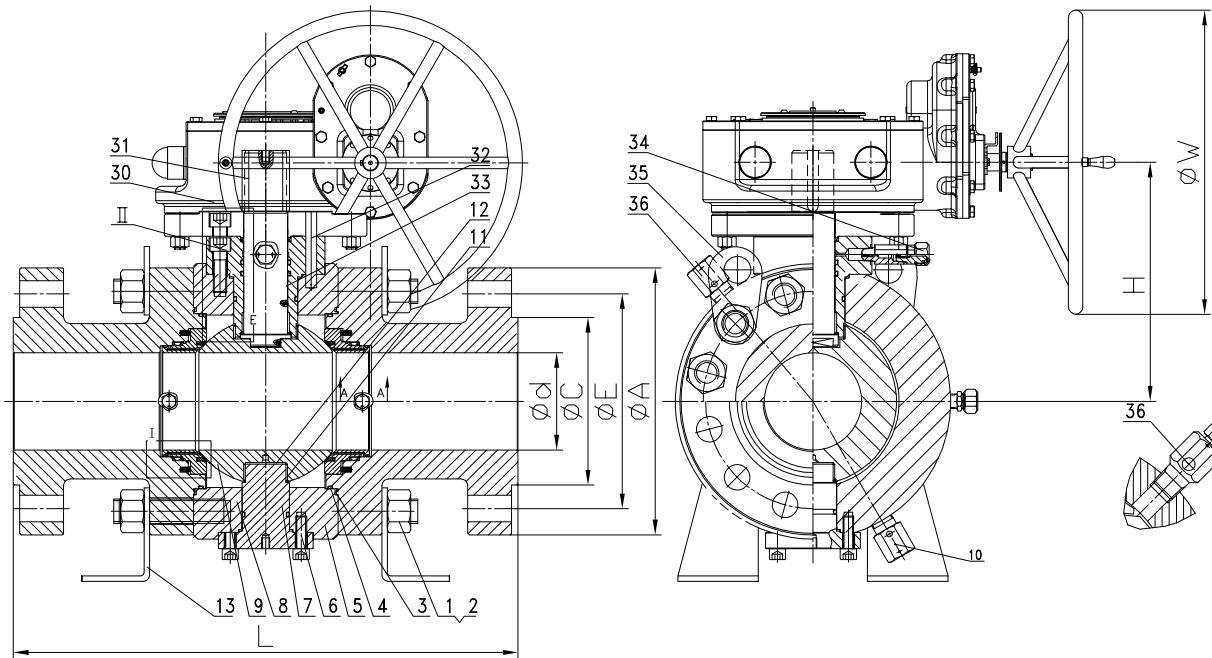
VALVE SIZE	DIMENSION IN mm.									
	A	B	C	d(Min)	E	f	L	n-ØF	ReF W	Ref H
6"-300LB	318	35.1	215.9	150	269.7	1.5	403	12-Ø22	350	280

NOTES:

1. The fire safe is designed in accordance with API 607.
2. DIB-1 seat.

Performance Standard		
Nominal CL (PN)	300LB	Test medium
Shell test pressure	7.5MPa	Water
Seal test pressure	5.5MPa	
Air test pressure	0.6MPa	Air
Suitable temperature	-29~120°C	
Suitable medium	Water/Steam/Oil etc	

Bosseal Valves

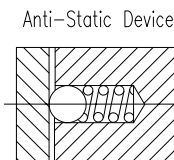
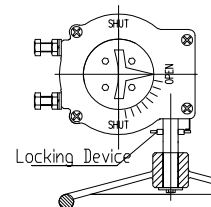
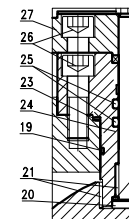
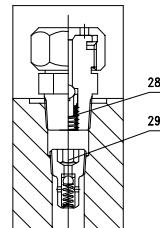
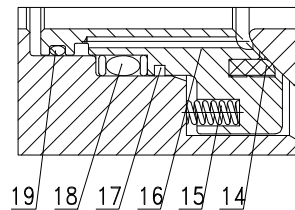


I DPE SEAT

A-A

II
3:1

P VIEW



36	VENT	LF2+Zn	
35	LIFTING LUGS	C.S.	
34	STEM INJECTION	LF2+Zn	
33	ANTISTATIC DEVICE	S.S.316	
32	ALIGNMENT PIN	C.S.	
31	KEY	C.S.	
30	GEAR BOX	ASSEMBLY	
29	CHECK VALVE	S.S.304	
28	SEAT INJECTION	LF2+Zn	
27	TOP FLANGE	ASTM A350 LF2 CL.1	
26	BOLT	ASTM A320 L7	
25	STEM O-RING+BACK UP	VITON+PTFE	
24	PACKING BOX	ASTM A350 LF2 CL.1	
23	GASKET	GRAPHITE	
22	WASHER	PTFE	
21	BEARING	C.S.+PTFE	
20	STEM	ASTM A182 F316	
19	O-RING	VITON	
18	SEAT O-RING+BACK UP	VITON+PTFE	
17	SEAT FIRESAFE PACKING	CARBON FIBRE GRAPHITE	
16	SEAT RING	ASTM A182 F316	
15	SEAT SPRING	INCONEL X-750	
14	SEAT INSERT	RPTFE	
13	SUPPORTING FEET	C.S.	
12	WASHER	PTFE	
11	BEARING	C.S.+PTFE	
10	DRAIN	LF2+Zn	
9	BALL	ASTM A182 F316	
8	BODY	ASTM A350 LF2 CL.1	
7	TRUNNION SHAFT	ASTM A350 LF2 CL.1	
6	BOLT	ASTM A350 LF2 CL.1	
5	BODY O-RING+BACK UP	VITON+PTFE	
4	GASKET	GRAPHITE+304S.S.	
3	BONNET	ASTM A350 LF2 CL.1	
2	BODY NUT	ASTM A194 7L	
1	BODY STUD	ASTM A320 L7	
NO.	PARTS NAME	MATERIAL	REMARK

TRUNNION BALL VALVE- DIB-1

Size	6"	Design&Manu	API 6D
Class	300Lb	Inspection&Test	API 6D
Rev.	00	End Connection	ASME B16.5-RF
Man.Fig.		Face-to-face dimension	ASME B16.10

Bosseal Valve(Suzhou) Co., Ltd