

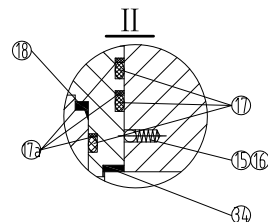
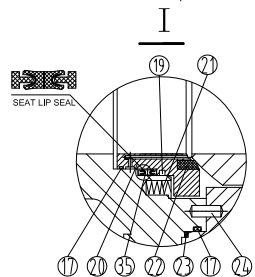
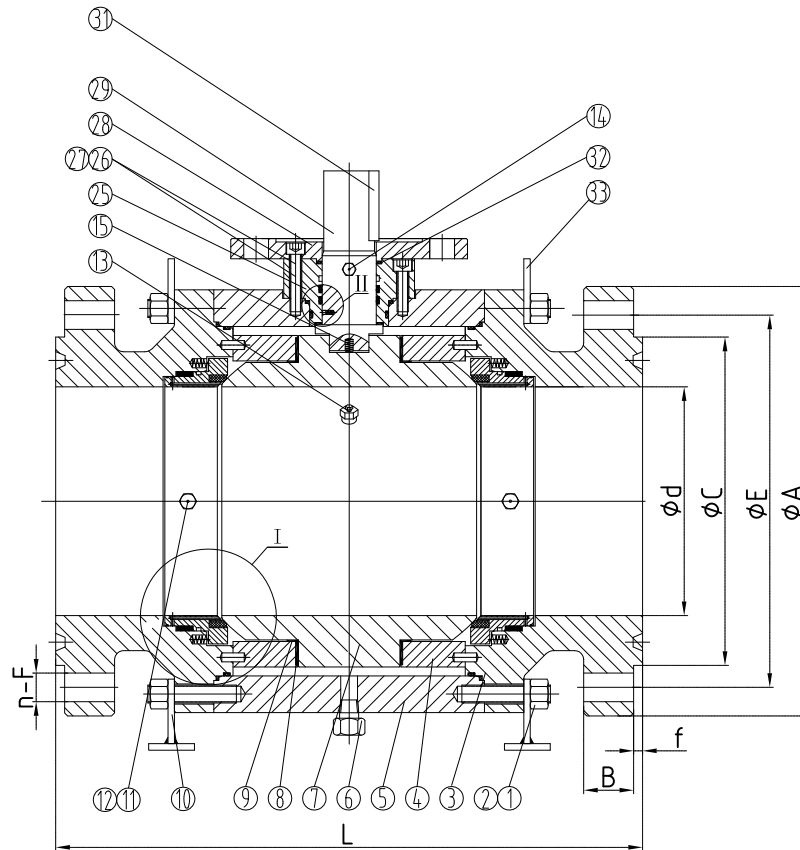
VALVE SIZE	DIMENSION IN mm.								FLANGE GROOVE
	A	B	C	d(Min)	E	f	L	n-ØF	
6"-2500LB	485	108	279	131	368.3	12.7	927	8-Ø54	R47

Bosseal Valves

NOTES:

1. The fire safe is designed in accordance with API 607.
2. DIB-1 seat.
3. Torque 3000N.M at 29803kpa.

Performance Standard		
Nominal CL (PN)	2500LB	Test medium
Shell test pressure	63.5MPa	Water
Seal test pressure	47.5MPa	
Air test pressure	0.6MPa	Air
Suitable temperature	-29~120°C	
Suitable medium	Water/Steam/Oil etc	



The Front Side

The Back Side

Sealant injection system for emergency Seat seal

37	RIVET	S.S.
36	NAMEPLATE	S.S.
35	SEAT LIP SEAL	PTFE+ELGILOY
34	WASHER	PTFE
33	LIFTING LUGS	C.S.
32	STEM FIRESAFE PACKING	GRAPHITE
31	KEY	C.S.
29	STEM	ASTM A182 F51
28	TOP FLANGE	ASTM A105
27	SCREW	ASTM A193 B7
26	ALIGNMENT PIN	C.S.
25	PACKING BOX	ASTM A105
24	PIN	C.S.
23	BODY GASKET	SS304+GRAPHITE
22	SEAT INSERT	PEEK
21	SEAT SPRING	INCONEL X-750
20	SEAT RING	ASTM A182 F6a CL.2
19	SEAT FIRESAFE PACKING	CARBON FIBRE GRAPHITE
18	GASKET	GRAPHITE
17a	O-RING Back Up	PTFE
17	O-RING	VITON-AED
16	ANTISTATIC BALL	304S.S.
15	ANTISTATIC SPRING	304S.S.
14	STEM INJECTION	C.S.
13	SAFETY VALVE	C.S.
12	CHECK VALVE	304S.S.
11	SEAT INJECTION	C.S.
10	SUPPORTING FEET	C.S.
9	WASHER	C.S.+PTFE
8	BEARING	C.S.+PTFE
7	BALL	ASTM A182 F6a CL.2+ENP
6	PLUG	C.S.
5	BODY	ASTM A105
4	TRUNNION SUPPORT	ASTM A105
3	ADAPTER	ASTM A105
2	BODY NUT	ASTM A194 2H
1	BODY STUD	ASTM A193 B7

NO.	PARTS NAME	MATERIAL	REMARK
TRUNNION BALL VALVE- DIB-1			
Size	6"	Design&Manu	API 6D
Class	2500Lb	Inspection&Test	API 598
Rev.	00	End Connection	ASME B16.5-RTJ
Man.Fig.		Face-to-face dimension	MFG'S

Bosseal Valve(Suzhou) Co., Ltd