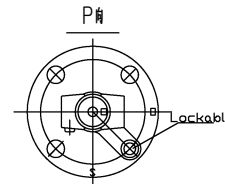
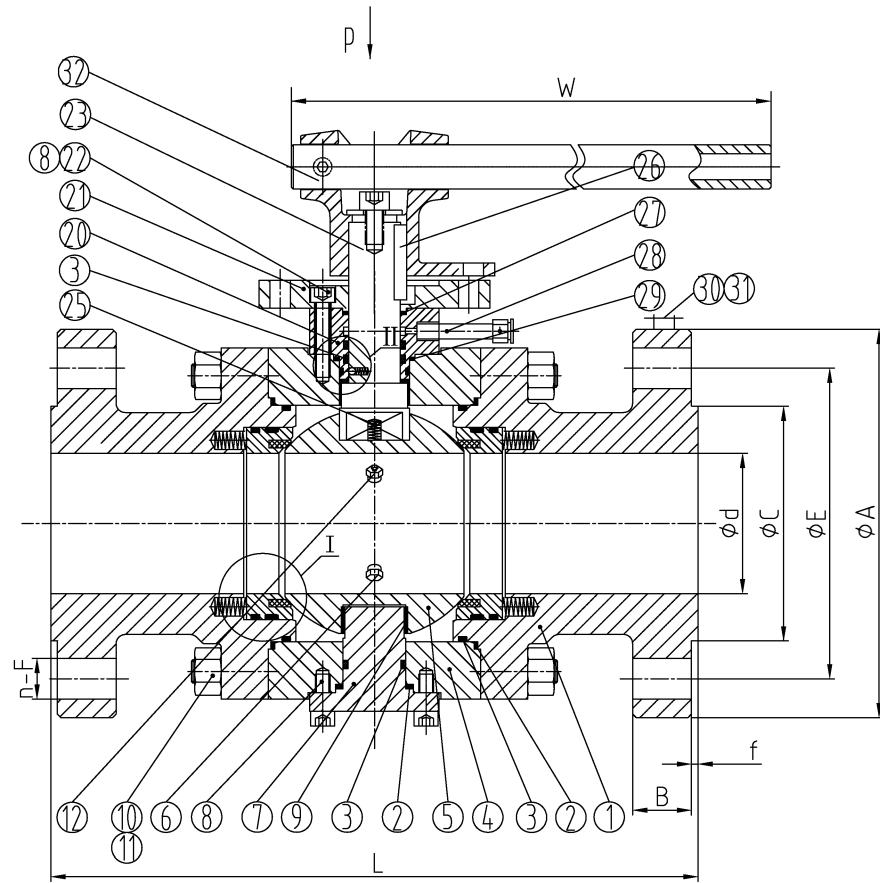


VALVE SIZE	DIMENSION IN mm.									Weight	Item
	A	B	C	D(Min)	E	f	H	L	n-ØF		
2"-150LB	150	17.5	92.1	49	120.7	2	350	178	4-Ø19	≈16kg	7
3"-150LB	190	22.3	127	74	152.4	2	400	203	4-Ø19	≈39kg	8
4"-150LB	230	22.3	157.2	100	190.5	2	450	229	8-Ø19	≈55kg	4

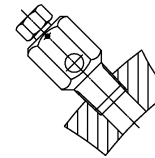
NOTES:

- The valve is fire safe designed/certified in accordance with API 607.
- Test duration per API 6D.

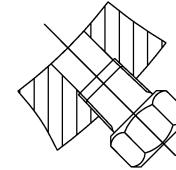
Performance Standard		
Nominal CL (PN)	150LB	Test medium
Shell test pressure	3.0MPa	Water
Seal test pressure	2.1Mpa	
Air test pressure	0.6Mpa	Air
Suitable temperature	-29~120℃	
Suitable medium	Water/Gas/Oil etc	



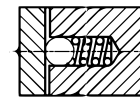
Vent Valve



Drain Valve



ANTISTATIC DEVICE

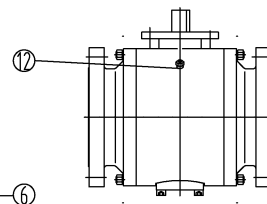
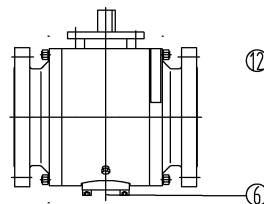
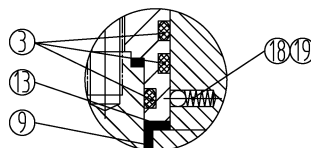
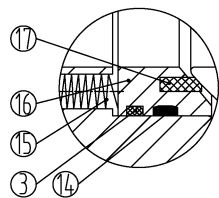


I

II

The Front Side

The Back Side



32	LEVER	CS+ZN	
31	RIVET	S.S.	
30	NAMEPLATE	S.S.	
29	GASKET	GRAPHITE	
28	STEM INJECTION	S.S.316	
27	PACKING	GRAPHITE	
26	KEY	S.S.316	
25	ANTISTATIC SPRING	316S.S.	
23	STEM	ASTM A182 F316	
22	PIN	S.S.316	
21	TOP FLANGE	ASTM A182 F316	
20	GLAND FLANGE	ASTM A182 F316	
19	ANTISTATIC BALL	316S.S.	
18	ANTISTATIC SPRING	316S.S.	
17	SEAT INSERT	RPTFE	
16	SEAT RING	ASTM A182 F316	
15	SEAT SPRING	INCONEL X-750	
14	SEAT FIRESAFE PACKING	CARBON FIBRE GRAPHITE	
13	WASHER	PTFE	
12	VENT VALVE	S.S. 316	
11	BODY NUT	ASTM A194 8M	
10	BODY STUD	ASTM A193 B8M	
9	BEARING	S.S.316+PTFE	
8	SCREW	ASTM A193 B8M	
7	TRUNNION	ASTM A182 F316	
6	PLUG	S.S.316	
5	BALL	ASTM A182 F316	
4	BODY	ASTM A182 F316	
3	O-RING	VITON-AED	
2	BODY GASKET	316S.S.+GRAPHITE	
1	ADAPTER	ASTM A182 F316	
NO.	PARTS NAME	MATERIAL	REMARK

Trunnion Ball Valve

Size	2", 3", 4"	Design&Manu	API 6D
Class	150Lb	Inspection&Test	API 598
Rev.	00	End Connection	ASME B16.5-RF
Man.Fig.		Face-to-face dimension	ASME B16.10

Bosseal Valves

Bosseal Valve(Suzhou) Co., Ltd