



**VERVO**

COMPANY PRESENTATION

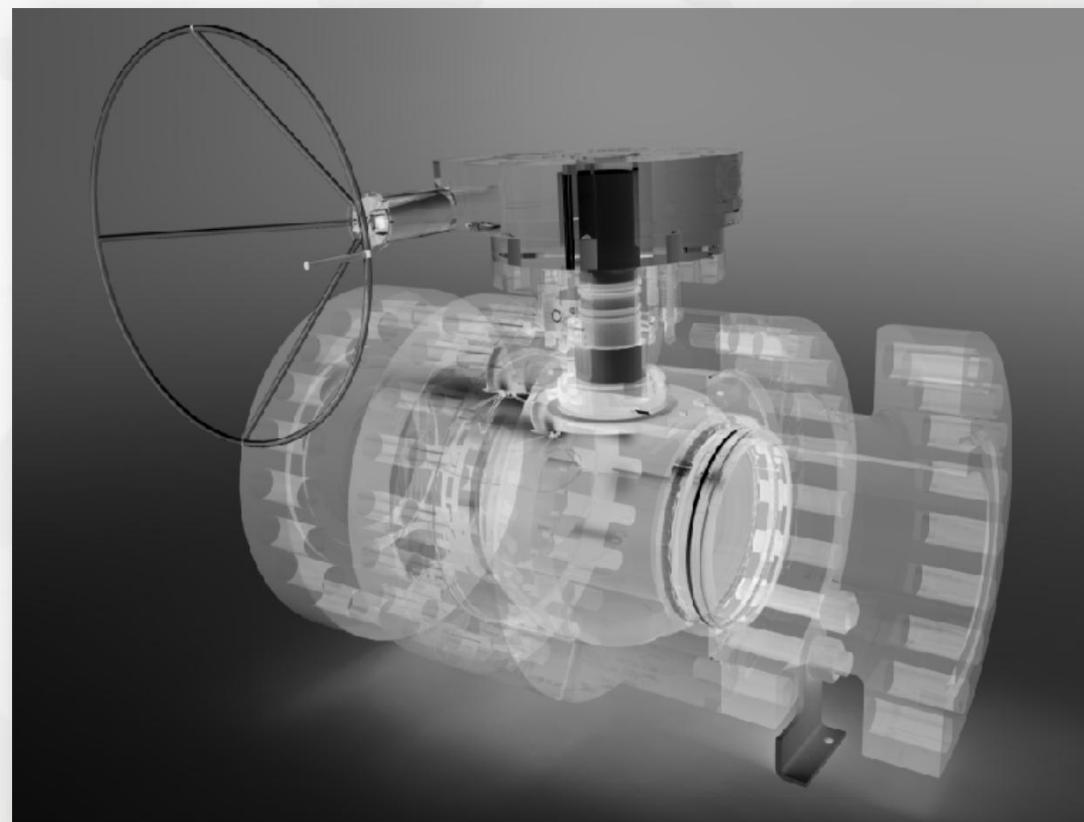
2022.10

## WHO WE ARE

**VERVO**

ZheJiang Vervo is your trusted partner for industrial valves. We thrive on a clear mindset to engineer and manufacture world-class valves.

With wide products range and large capacity, we are proud to provide a complete **one stop valve solutions** for customers' needs.



# VERVO AT A GLANCE

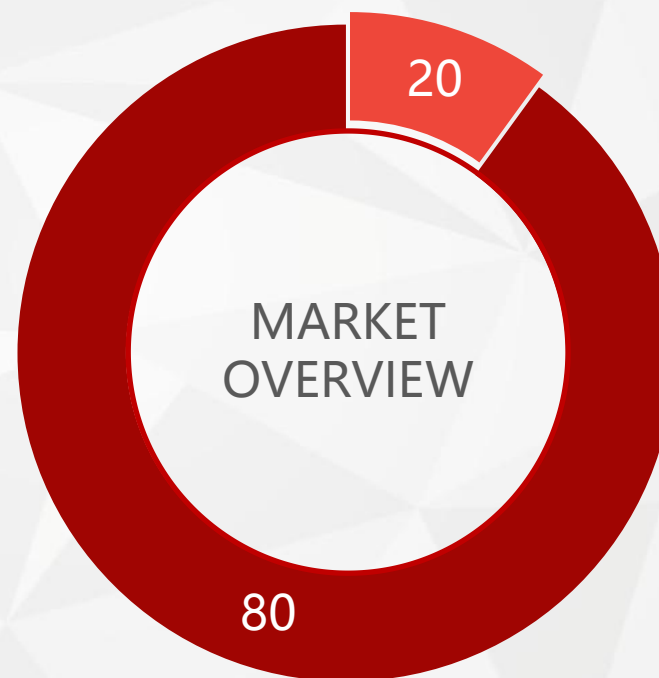
# VERVO



- **100**  
Number of Employees
- **12000**  
Covered Workshop Area (m<sup>2</sup>)
- **10000**  
Annual Output (Ton)



- **80%**  
International Market
- **20%**  
Domestic Market (China)
- **15 Mil**  
Turnover USD 15 Million





# WORLDWIDE LOCATIONS

**VERVO**

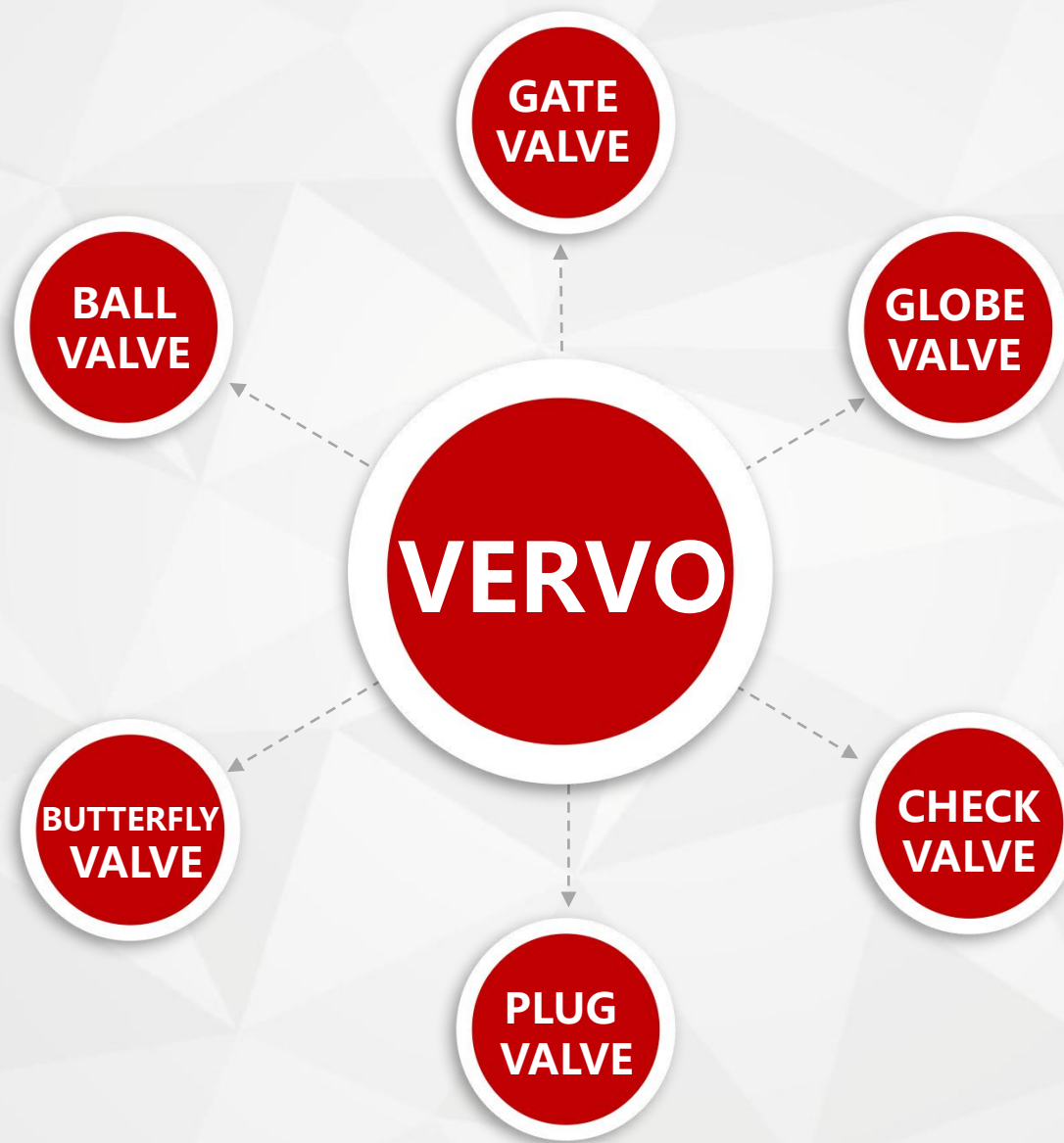


VERVO CHINA  
(Factory & Sales Office)

# VERVO CHINA – Factory & Sales Office

**VERVO**





## ■ Applicable Industrial Standards

API / ANSI / ASME  
DIN / BS / GOST / GB  
Customization

## ■ Available Materials

Type: Carbon Steel / Alloy Steel / Stainless Steel / Duplex Stainless Steel / Special Alloy Steel  
Form: Casting / Forging / Bar

## ■ Size and Class Range

Size: ½" - 56" (DN 15 - DN 1200)  
Class: 150# - 4500# (PN 6 - PN 760)

*\*Different type of the valves with different size and class range.*





# INDUSTRIAL APPLICATIONS

**VERVO**



Oil & Gas



Chemical



Water



LNG



Mining



Marine



Power

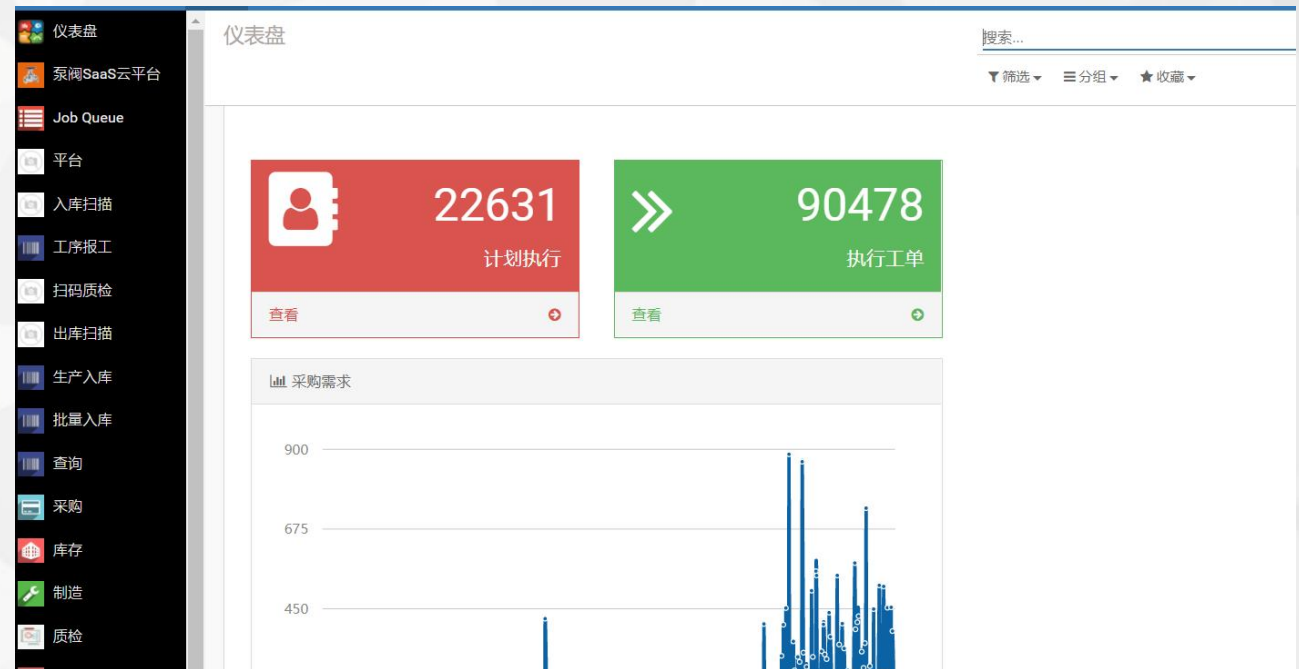


Oil Transportation



- ISO 9001:2008
- CE-PED (MODULE H)
- API 6FA
- ISO 15848-1 (Class A CO1)

VERVO is dedicated to operate as a digitalized manufacturer, we have launched various IT programs such as ERP systems to improve our management and operation.



# CUSTOMER MANAGEMENT

**VERVO**

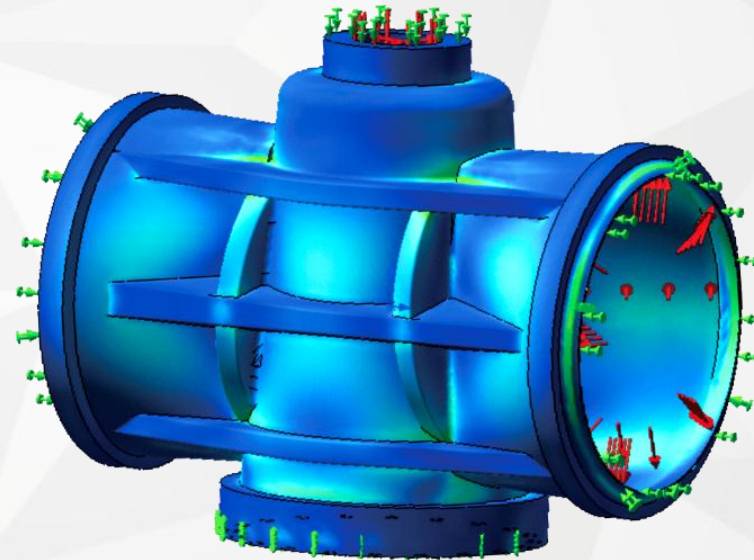
VERVO provides customer management  
base on CRM.



 CRM



Supported by a strong engineering team, VERVO has invested AutoCAD & Solidworks (with Finite Element Analysis) for design and product development.



■ 3D - DESIGN & ANALYSIS

## PRODUCTION BASE

**VERVO**

VERVO production base is located in Lishui City, Zhejiang Province, China.  
The covered production workshop is over 12,000 square meters.



## MACHINING WORKSHOP BUILDING

# PRODUCTION BASE

**VERVO**

VERVO production runs on 6S Management.



■ 6S Management



# MANUFACTURING EQUIPMENTS

**VERVO**

VERVO now has more than 200 technical, R&D and production workers.



■ RAW MATERIAL  
INCOMING INSPECTION



■ ROUGH  
MACHINING

# MANUFACTURING EQUIPMENTS

**VERVO**

VERVO has state-of-art CNC processing equipment to ensure machining quality and cover wide range.



■ Automatic CNC  
MACHINING CENTER



■ Automatic Drilling Hole  
MACHINING CENTER



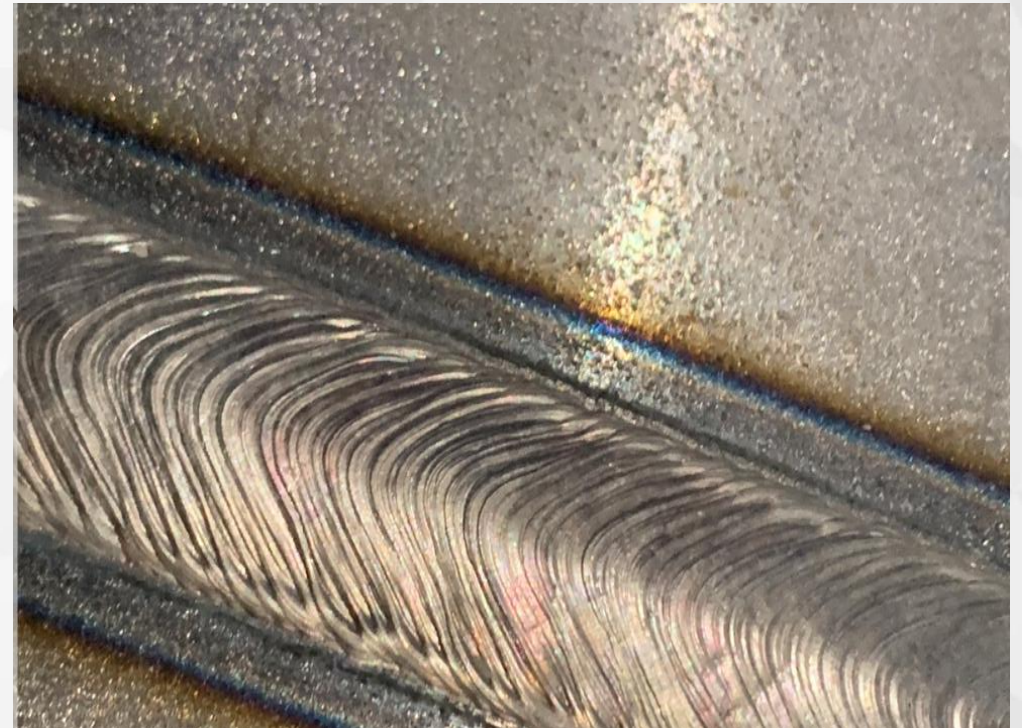
# MANUFACTURING EQUIPMENTS

**VERVO**

VERVO has 8 sets of automatic welding equipment with capacity for up to DN1400



**AUTOMATIC WELDING EQUIPMENT**



**WELDING QUALITY**

# STORAGE WAREHOUSE

**VERVO**

VERVO has a storage warehouse of 3,000 square meters.

It includes: raw material, valve mould, fastener, gasket, O-ring, etc...



■ STORAGE FOR  
VALVE PARTS



■ STORAGE FOR  
VALVE CASTING, FORGING, SEMI PRODUCTS



# VALVE ASSEMBLY

**VERVO**

VERVO has two valve assembly lines fit for both small sizes and large sizes



■ HIGH QUALITY VALVE PART  
PENDING FOR ASSEMBLY



■ ASSEMBLY LINE



## QUALITY CONTROL

**VERVO**

VERVO strictly follows ISO 9001 and even higher standards to ensure the highest product quality.



PMI  
MATERIAL INSPECTION

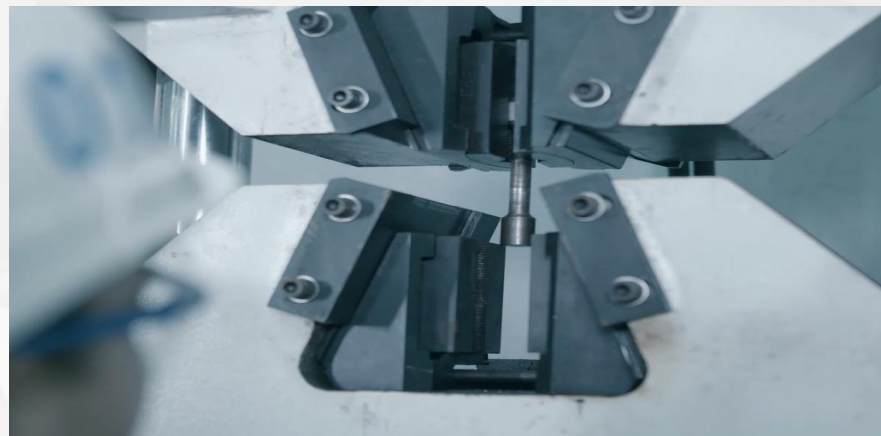
# QUALITY CONTROL

**VERVO**

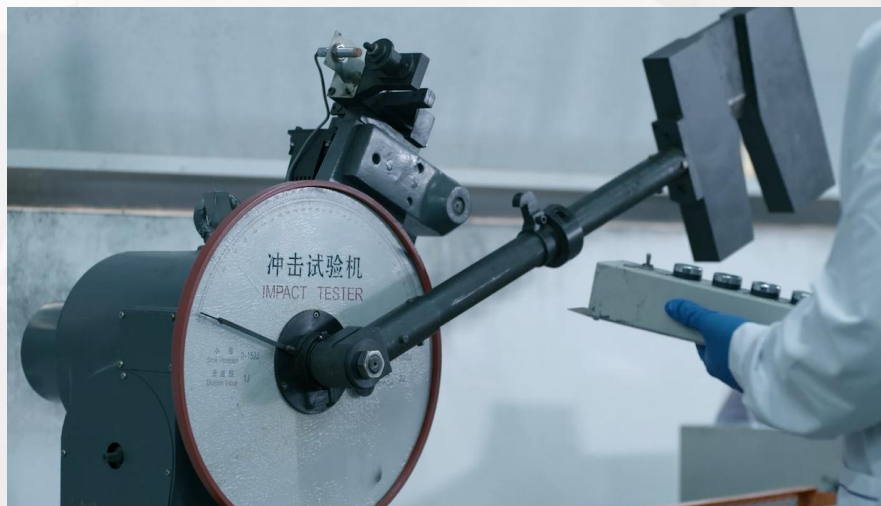
Non-destructive Examination:



■ ULTRASONIC INSPECTION



■ TENSILE TEST



■ IMPACT TEST

# QUALITY CONTROL

**VERVO**



COORDINATE MEASURING MACHINE (CMM)  
INSPECTION ARM





**FE TEST  
MULTI-TURN VALVE**



**FE TEST  
QUARTER-TURN VALVE**

# QUALITY CONTROL

**VERVO**



■ BIG SIZE - STANDARD TEST  
UPTO 56in/DN1400

■ STANDARD TEST



## SPECIAL TESTING

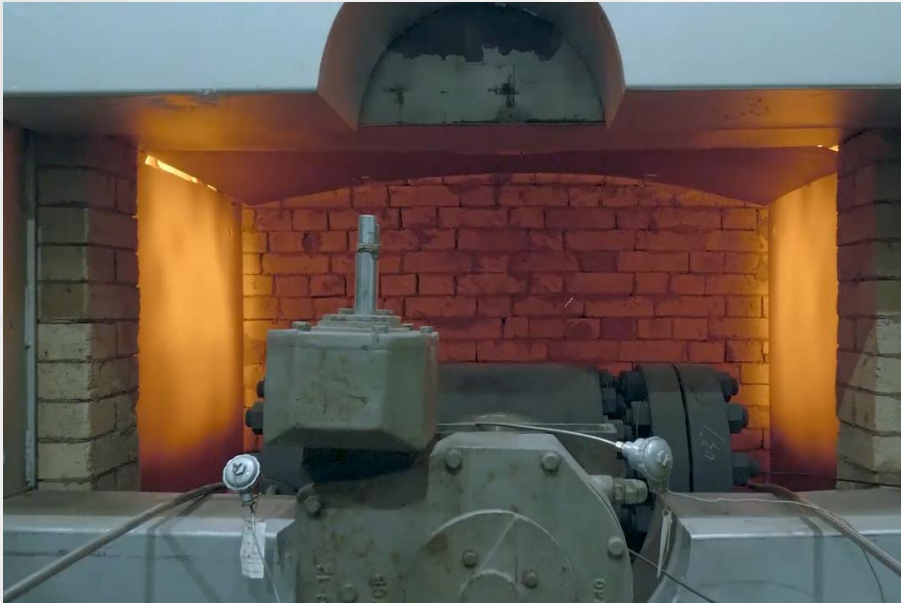


- HIGH PRESSURE GAS TEST UNDER-GROUND



- REMOTE WITNESS THROUGH CAMERA

**SPECIAL TESTING**



**HIGH TEMPERATURE TESTING**



**CRYOGENIC TESTING**



# QUALITY CONTROL

## SPECIAL TESTING

**VERVO**



■ RISING STEM BALL VALVE  
10,000 CYCLE TESTING



■ RISING STEM BALL VALVE  
HIGH TEMPERATURE TEST AT 362°C



# PACKING

**VERVO**



PACKING

# VERVO PRODUCT GALLERY

**VERVO**



■ TRUNNION BALL VALVE  
THREE PIECES



■ TRUNNION BALL VALVE  
TWIN BALL CONSTRUCTION



# VERVO PRODUCT GALLERY

**VERVO**



■ TOP ENTRY BALL VALVE WITH  
STEM EXTENSION  
LUKOIL

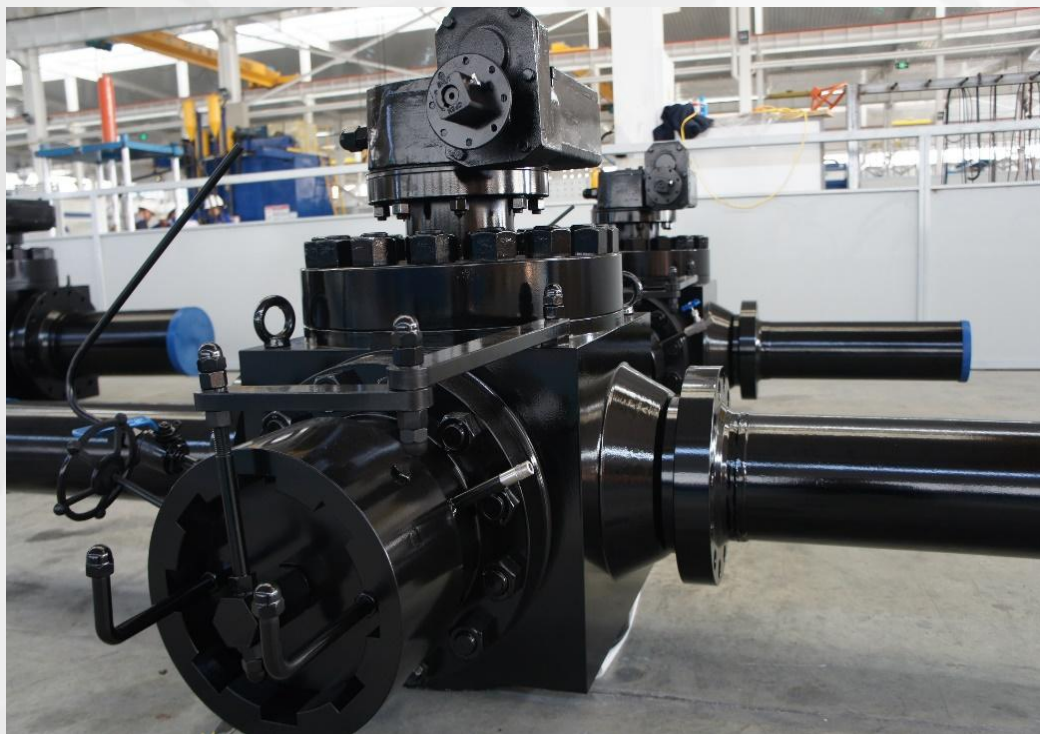


■ TOP ENTRY BALL VALVE  
DN200, PN320



# VERVO PRODUCT GALLERY

**VERVO**



■ TOP ENTRY PIGGING VALVE

# VERVO PRODUCT GALLERY

**VERVO**



CRYOGENIC GATE VALVE



CRYOGENIC BALL VALVE



# VERVO PRODUCT GALLERY

**VERVO**



WWW.VERVO.CN  
BUTTERFLY VALVE

■ TRIPLE OFFSET BUTTERFLY VALVE 18" 900LB  
RUSSIA SHCHEKINOAZOT



# VERVO PRODUCT GALLERY

**VERVO**



■ SWING CHECK VALVE  
CARBON STEEL



■ SWING CHECK VALVE  
LOW TEMPERATURE CARBON STEEL

# VERVO PRODUCT GALLERY

**VERVO**



■ SWING CHECK VALVE  
PRESSURE SEAL BONNET



■ AXIAL CHECK VALVE  
LOW TEMPERATURE CARBON STEEL



# VERVO PRODUCT GALLERY

**VERVO**



■ WEDGE GATE VALVE  
CARBON STEEL



■ WEDGE GLOBE VALVE  
CARBON STEEL



# VERVO PRODUCT GALLERY

**VERVO**



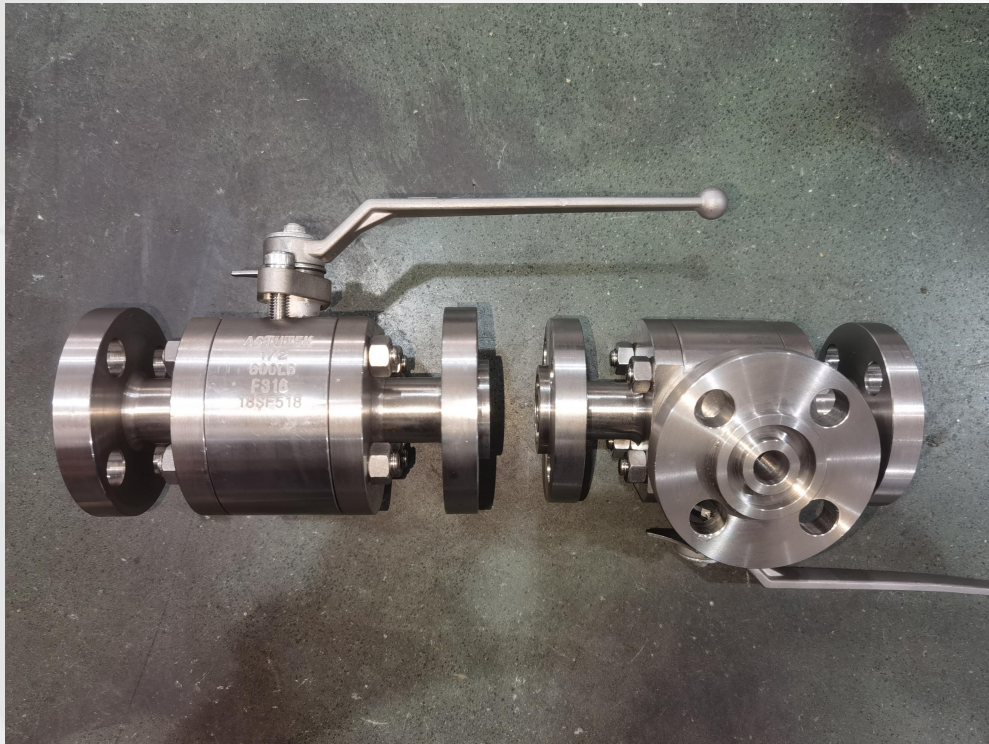
■ WEDGE GATE VALVE  
PRESSURE SEAL BONNET





# VERVO PRODUCT GALLERY

**VERVO**



■ API608 THREE WAY BALL VALVES



■ API608 BALL VALVES



# VERVO PRODUCT GALLERY

**VERVO**



**FORGED STEEL VALVE**  
API 602



# VERVO PRODUCT GALLERY

**VERVO**



**GLOBE VALVE  
FORGED BODY**

# WHY CHOOSE VERVO

**VERVO**



- ENGINEERING DESIGN CONSULTING
- VALVE TECHNOLOGY TRAINING
- ONSITE INSTALLATION SUPPORT
- ONSITE MAINTENANCE SERVICE
- ON TIME AFTER-SALES SERVICE

Your needs is what we work hard for. Every day in every way, we at VERVO evolve ourselves to be a better supplier and partner when it comes to your valves requirement and solution.



THANK YOU

# Thank you!

**We are looking forward to cooperate with you!**