

### MONO CRYSTALLINE SOLAR PANEL

#### High Efficiency

20.0% Advanced solar cell technology ensures, The high module efficiency up to Positive Tolerance

Module guarantees a positive –only power tolerance of 0 to +5w to bring extra benefit.

#### Strong Load Capacity

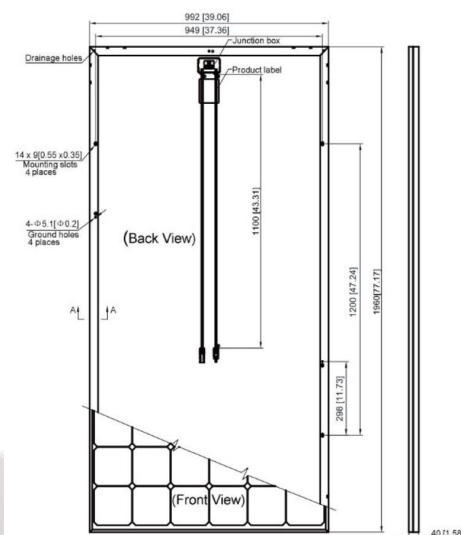
Module is capable to withstand 2400Pa wind loads and 5400Pa Snow loads.

#### Reliable quality

Module is manufactured in accordance with international quality standards ISO9001

#### Higher Weatherproof Rating

J-Box performs module with an environmental protection rating to IP68.



### ELECTRICAL DATA

Model:

WD370-390WM 72CELLS

Maximum Power (Pmax)	390W	385W	380W	375W	370W
Tolerance of power	0/+5W	0/+5W	0/+5W	0/+5W	0/+5W
Maximum Power Voltage(Vmp)	39.6V	39.4V	39.2V	39.0V	38.8V
Maximum Power Current(Imp)	9.85A	9.77A	9.70A	9.62A	9.54A
Open Circuit Voltage(Voc)	48.4V	48.2V	48.1V	48.0V	47.9V
Short Circuit Current (Isc)	10.12A	10.07A	10.02A	9.96A	9.91A
Module Efficiency	20.10%	19.80%	19.50%	19.30%	19.00%
Operating module Temperature	- 40 °C to +85 °C				
Maximum system(DC) Voltage	1000V/1500V(IEC)				
Series Fuse Rating	15A				
NOCT	45±2 °C				
Temperature Coefficients of Pmax	- 0.410%/°C				
Temperature Coefficients of Voc	- 0.340%/°C				
Temperature Coefficients of Isc	+ 0.060%/°C				

### MECHANICAL DATA

Solar Cell	Mono crystalline 156.75×156.75mm(6 inches )5BB		
Number of cells	72( 6×12 )		
Dimensions	1960×992×40mm ( 77.17×39.06×1.57 inches )		
Weight	22.1Kg ( 48.7lbs )		
Front Glass	3.2mm(0.13 inches) front glass		
Frame	Anodized aluminum alloy		
Junction Box	IP68 rated		
Cable	4mm <sup>2</sup> solar cable 1100mm(43.3 inches )		
Connector	JK4/Z4S-abcde		

PACKING INFORMATION	20FT	40HQ	Remarks
Pieces per pallet	26	26	
Pallets per container	10	24	
Pieces per container	260	624	

### MONO CRYSTALLINE SOLAR PANEL

#### High Efficiency

20.0% Advanced solar cell technology ensures, The high module efficiency up to Positive Tolerance

Module guarantees a positive –only power tolerance of 0 to +5w to bring extra benefit.

#### Strong Load Capacity

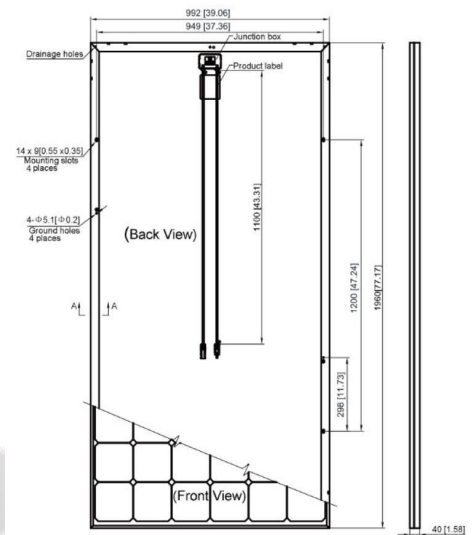
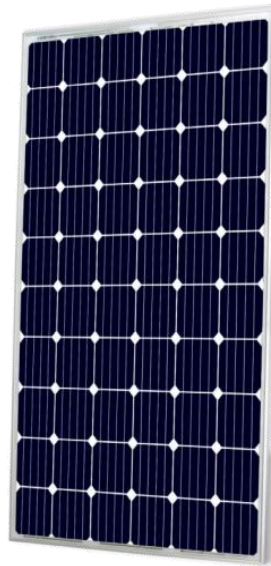
Module is capable to withstand 2400Pa wind loads and 5400Pa Snow loads.

#### Reliable quality

Module is manufactured in accordance with international quality standards ISO9001

#### Higher Weatherproof Rating

J-Box performs module with an environmental protection rating to IP68.



### ELECTRICAL DATA

Model:

WD305-320WM 60CELLS

Maximum Power (Pmax)	325W	320W	315W	310W	305W
Tolerance of power	0/+5W	0/+5W	0/+5W	0/+5W	0/+5W
Maximum Power Voltage(Vmp)	33.9V	33.7V	33.5V	33.2V	33.0V
Maximum Power Current(Imp)	9.59A	9.50A	9.41A	9.34A	9.26A
Open Circuit Voltage(Voc)	40.1V	40.0V	39.9V	39.8V	39.7V
Short Circuit Current (Isc)	10.13A	10.05A	9.97A	9.89A	9.81A
Module Efficiency	20.00%	19.60%	19.20%	18.90%	18.60%
Operating module Temperature	- 40 °C to +85 °C				
Maximum system(DC) Voltage	1000V/1500V(IEC)				
Series Fuse Rating	15A				
NOCT	45±2 °C				
Temperature Coefficients of Pmax	- 0.410%/°C				
Temperature Coefficients of Voc	- 0.340%/°C				
Temperature Coefficients of Isc	+ 0.060%/°C				

### MECHANICAL DATA

Solar Cell	Mono crystalline 156.75×156.75mm(6 inches )5BB		
Number of cells	60 ( 6×10 )		
Dimensions	1650×992×35mm ( 65.0×39.06×1.38 inches )		
Weight	18.3Kg ( 40.3lbs )		
Front Glass	3.2mm(0.13 inches) front glass		
Frame	Anodized aluminum alloy		
Junction Box	IP68 rated		
Cable	4mm <sup>2</sup> solar cable 900mm(35.43 inches )		
Connector	JK4/Z4S-abcde		

PACKING INFORMATION	20FT	40HQ	Remarks
Pieces per pallet	30	30	
Pallets per container	12	28	
Pieces per container	360	840	

### POLY CRYSTALLINE SOLAR PANEL

#### High Efficiency

20.0% Advanced solar cell technology ensures, The high module efficiency up to 20.1%.

#### Positive Tolerance

Module guarantees a positive –only power tolerance of 0 to +5w to bring extra benefit.

#### Strong Load Capacity

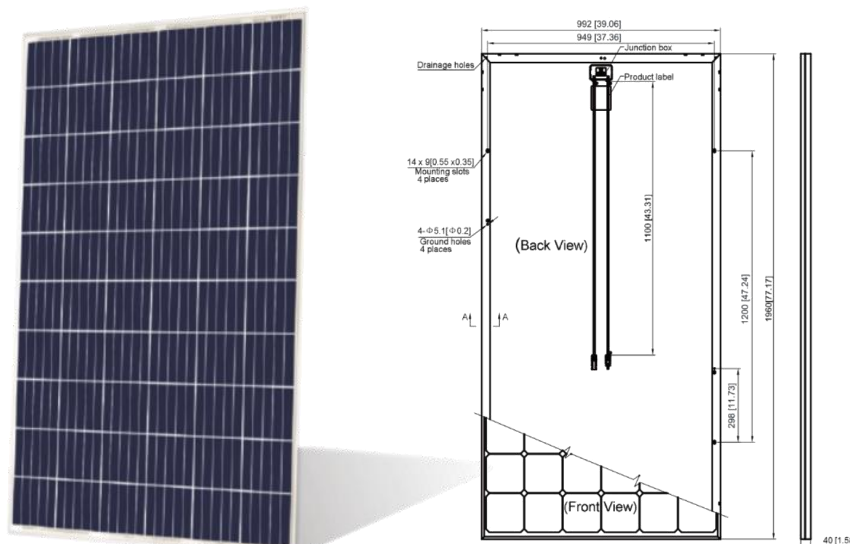
Module is capable to withstand 2400Pa wind loads and 5400Pa Snow loads.

#### Reliable quality

Module is manufactured in accordance with international quality standards ISO9001

#### Higher Weatherproof Rating

J-Box performs module with an environmental protection rating to IP68.



### ELECTRICAL DATA

#### Model:

#### WD330-350WP 72CELLS

Maximum Power (Pmax)	350W	345W	340W	335W	330W
Tolerance of power	0/+5W	0/+5W	0/+5W	0/+5W	0/+5W
Maximum Power Voltage(Vmp)	38.3V	38.1V	37.9V	37.7V	37.5
Maximum Power Current(Imp)	9.14A	9.06A	8.98A	8.89A	8.80A
Open Circuit Voltage(Voc)	46.6V	46.5V	46.4V	46.3V	46.2V
Short Circuit Current (Isc)	9.68A	9.62A	9.58A	9.48A	9.38A
Module Efficiency	18.00%	17.70%	17.50%	17.20%	17.00%
Operating module Temperature	- 40°C to +85°C				
Maximum system(DC) Voltage	1000V/1500V(IEC)				
Series Fuse Rating	15A				
NOCT	45±2°C				
Temperature Coefficients of Pmax	- 0.410%/°C				
Temperature Coefficients of Voc	- 0.340%/°C				
Temperature Coefficients of Isc	+ 0.060%/°C				

### MECHANICAL DATA

Solar Cell	Poly crystalline 156.75×156.75mm(6 inches) 5BB		
Number of cells	72( 6×12 )		
Dimensions	1960×992×40mm ( 77.17×39.06×1.57 inches )		
Weight	22.1Kg ( 48.7lbs )		
Front Glass	3.2mm(0.13 inches) front glass		
Frame	Aanodized aluminum alloy		
Junction Box	IP68 rated		
Cable	4mm <sup>2</sup> solar cable 1100mm(43.3 inches )		
Connector	JK4/Z4S-abcde		

PACKING INFORMATION	20FT	40HQ	Remarks
Pieces per pallet	26	26	
Pallets per container	10	24	
Pieces per container	260	624	

### POLY CRYSTALLINE SOLAR PANEL

#### High Efficiency

20.0% Advanced solar cell technology ensures, The high module efficiency up to 20.1%.

#### Positive Tolerance

Module guarantees a positive –only power tolerance of 0 to +5w to bring extra benefit.

#### Strong Load Capacity

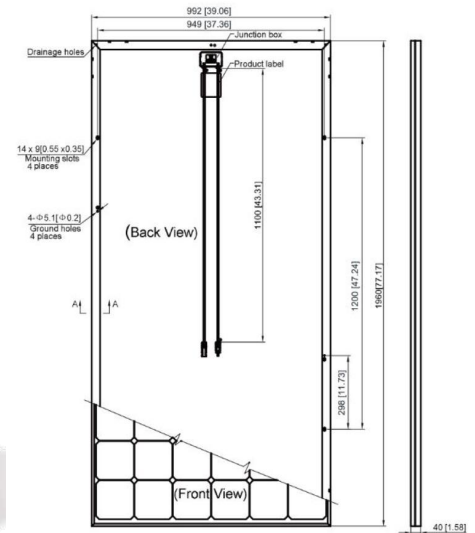
Module is capable to withstand 2400Pa wind loads and 5400Pa Snow loads.

#### Reliable quality

Module is manufactured in accordance with international quality standards ISO9001

#### Higher Weatherproof Rating

J-Box performs module with an environmental protection rating to IP68.



### ELECTRICAL DATA

#### Model:

#### WD275-295WP 60CELLS

Maximum Power (Pmax)	295W	290W	285W	280W	275W
Tolerance of power	0/+5W	0/+5W	0/+5W	0/+5W	0/+5W
Maximum Power Voltage(Vmp)	32.1V	32.0V	31.9V	31.8V	31.7V
Maximum Power Current(Imp)	9.19A	9.07A	8.94A	8.81A	8.68A
Open Circuit Voltage(Voc)	39.5V	39.3V	39.1V	38.9V	38.7V
Short Circuit Current (Isc)	9.27A	9.24A	9.21A	9.18A	9.14A
Module Efficiency	18.00%	17.70%	17.40%	17.10%	16.80%
Operating module Temperature	- 40°C to +85°C				
Maximum system(DC) Voltage	1000V/1500V(IEC)				
Series Fuse Rating	15A				
NOCT	45±2°C				
Temperature Coefficients of Pmax	- 0.410%/°C				
Temperature Coefficients of Voc	- 0.340%/°C				
Temperature Coefficients of Isc	+ 0.060%/°C				

### MECHANICAL DATA

Solar Cell	Mono crystalline 156.75×156.75mm(6 inches) 5BB		
Number of cells	60 ( 6×10 )		
Dimensions	1650×992×35mm ( 65.0×39.06×1.38 inches )		
Weight	18.3Kg ( 40.3lbs )		
Front Glass	3.2mm(0.13 inches) front glass		
Frame	Aanodized aluminum alloy		
Junction Box	IP68 rated		
Cable	4mm <sup>2</sup> solar cable 900mm(35.43 inches)		
Connector	JK4/Z4S-abcde		

PACKING INFORMATION	20FT	40HQ	Remarks
Pieces per pallet	30	30	
Pallets per container	12	28	
Pieces per container	360	840	

### WDM SERIES MODIFIED SINE WAVE INVERTER

#### Features:

Modified sine wave inverters can meet all kinds of electrical loads.

Protections: short circuit, high temperature, overvoltage, low voltage, short circuit, overload protection and other functions.

Advanced circuit design, high conversion efficiency, rich interface, stable output voltage.

Metal enclosures, reasonably designed and good heat dissipation.

Advanced anti-interference technology, full-featured protection circuit and soft-start circuit, convenient operation mode.

Soft-start function to eliminate cold start failure, instantaneous drop and fast recovery function to reduce the instantaneous overload when start-up.



#### Main Specification

Model:	WDM1000	WDM1200	WDM1500	WDM2000	WDM3000	WDM5000
Max Continuous Power (W)	1000W	1200W	1500W	2000W	3000W	5000W
Peak Load Power Rate(W)	2000W	2400W	3000W	4000W	6000W	10000W
Input Voltage (V)	DC12V/DC24V/DC36V/DC48V/DC60V					
Output Voltage Range (V)	AC110V/AC120V/AC220V/AC240					
Output Frequency (Hz)	50Hz or 60Hz					
USB	USB					
Output Waveform	Modified Sine Wave					
Cooling	Fan					
Product Size (MM)	262*150*76	265*150*76	307*150*76	393*150*107	454*180*142	598*180*168
N.W. (KGS)	1.6kgs	1.7kgs	1.9kgs	3.3kgs	4.9kgs	8kgs
Packing (MM)	640*425*290	640*425*290	640*425*290	645*485*345	505*505*430	672*252*237
PCS Per Carton	8pcs	8pcs	6pcs	6pcs	4pcs	4pcs



### WDM SERIES MPPT CHARGE CONTROLLER

Auto identification and selection of system voltage

High performance 32 bits CPU

Wide PV input voltage range, convenient for system configuration

MPPT charge mode, increase power usage efficiency of solar panels

LCD display, intelligent batteries charging status display

Running status display of solar panels, batteries and loads



#### Main Specification

Model	WD48-10	WD48-20	WD48-30	WD48-40	WD48-50	WD48-60
-------	---------	---------	---------	---------	---------	---------

#### INPUT

Max. PV Input Voltage	150V						
MPPT Voltage Range	12V	15V - 120V					
	24V	30V - 120V					
	48V	60V - 120V					
Max. PV Input Power	12V	140 W	280 W	420 W	560 W	700 W	840 W
	24V	280 W	560 W	840 W	1120 W	1400 W	1680 W
	48V	560 W	1120 W	1680 W	2240 W	2800 W	3360 W

#### BATTERY CHARGING

Battery System Voltage	12V/24V/48V auto recognition					
Max. Charging Current	10A	20A	30A	40A	50A	60A
Charging mode	Maximum Power Point Tracking (MPPT)					
Charging method	Three stages: Constant Current (MPPT); Constant Voltage; Floating Charge					
Max. Charging Efficiency	99%					
Battery Types Supported	Lead Acid Battery, Gel Battery, Flooded Battery, Lithium Battery					

#### PROTECTION

Overload Protection	1.5 times rated current 3s overload protection action, automatic recovery in 1 minute
Output Short Circuit Protection	Hardware protection fuses, automatic recovery in 10 minute
Over Temperature Protection	Charging or discharging stopped when controller temperature over 75°C, Charging or discharging recovery when temperature back to 55°C

#### OTHERS

Cooling Method	Intelligent Control Cooling Fan		
Communication Method	RS485	Remote Control	Optional
Operating Ambient Temperature	-15°C - 50°C	Own Consumption	< 20mA
Storage Temperature	-20°C - 60°C	Protection Grade	IP20
Dimensions	185x135x65mm	240x143x74mm	
Net Weight	1.15 kgs	1.80 kgs	
Packing Information	380x250x520mm,11.0kgs,8pcs	420x310x 270mm,8.0kgs/4pcs	

**Main Specification**

Model	WD48-80	WD48-100	WD96-50	WD96-100	WD192-50	WD216-50
-------	---------	----------	---------	----------	----------	----------

**INPUT**

Max. PV Input Voltage	150V		300V		450V	
MPPT Voltage Range	48V	60V - 120V				
	96V	96V - 240V				
	192V	192V - 360V				
	216V	216V - 360V				
Max. PV Input Power	48V	4480 W	5600 W			
	96V			5600 W	11200 W	
	192V				11200 W	
	216V				12600 W	

**BATTERY CHARGING**

Battery System Voltage	12V/24V/48V auto			96V	192V	216V
Max. Charging Current	80A	100A	50A	100A	50A	50A
Charging mode	Maximum Power Point Tracking (MPPT)					
Charging method	Three stages: Constant Current (MPPT); Constant Voltage; Floating Charge					
Max. Charging Efficiency	99%					
Battery Types Supported	Lead Acid Battery, Gel Battery, Flooded Battery, Lithium Battery					

**PROTECTION**

Overload Protection	1.5 times rated current 3s overload protection action, automatic recovery in 1 minute					
Output Short Circuit Protection	Hardware protection fuses, automatic recovery in 10 minute					
Over Temperature Protection	Charging or discharging stopped when controller temperature over 75°C, Charging or discharging recovery when temperature back to 55°C					

**OTHERS**

Cooling Method	Intelligent Control Cooling Fan					
Comunication Method	RS485		Remote Control		Optional	
Operating Ambient Temperature	-15°C - 50°C			Own Consumption		< 20mA
Storage Temperature	-20°C - 60°C			Protection Grade		IP20
Dimensions	280x180x100mm		315x250x108mm		400x300x162mm	
Net Weight	3.7kgs		4.5kgs	5.6kgs	10kgs	11kgs
Packing	490x350x350mm/4pcs		370x310x340mm/2pcs		460x380x210mm/1pc	
	16.0kgs/4 pcs		11kgs/2pcs	13kgs/2pcs	11kgs/1pc	12kgs/1pc
Warranty	2 years					



**Main Specification**

<b>Model</b>	<b>RF240-50</b>	<b>RF384-50</b>	<b>RF192-100</b>	<b>RF216-100</b>	<b>RF240-100</b>	<b>RF384-100</b>
--------------	-----------------	-----------------	------------------	------------------	------------------	------------------

**INPUT**

<b>Max. PV Input Voltage</b>	<b>500V</b>	<b>800V</b>	<b>450V</b>	<b>500V</b>	<b>800V</b>
------------------------------	-------------	-------------	-------------	-------------	-------------

<b>MPPT Voltage Range</b>	192V	192V - 360V				
	216V	216V - 360V				
	240V	240V - 400V				
	384V	384V - 640V				

<b>Max. PV Input Power</b>	192V	22400 W				
	216V	25200 W				
	240V	14000 W				28000 W
	384V	22400 W				44800 W

**BATTERY CHARGING**

<b>Battery System Voltage</b>	<b>240V</b>	<b>384V</b>	<b>192V</b>	<b>216V</b>	<b>240V</b>	<b>384V</b>
-------------------------------	-------------	-------------	-------------	-------------	-------------	-------------

<b>Max. Charging Current</b>	<b>50A</b>	<b>50A</b>	<b>100A</b>	<b>100A</b>	<b>100A</b>	<b>100A</b>
------------------------------	------------	------------	-------------	-------------	-------------	-------------

**Charging mode** Maximum Power Point Tracking (MPPT)

**Charging method** Three stages: Constant Current (MPPT); Constant Voltage; Floating Charge

**Max. Charging Efficiency** 99%

**Battery Types Supported** Lead Acid Battery, Gel Battery, Flooded Battery, Lithium Battery

**PROTECTION**

**Overload Protection** 1.5 times rated current 3s overload protection action, automatic recovery in 1 minute

**Output Short Circuit Protection** Hardware protection fuses, automatic recovery in 10 minute

**Over Temperature Protection** Charging or discharging stopped when controller temperature over 75°C, Charging or discharging recovery when temperature back to 55°C

**OTHERS**

**Cooling Method** Intelligent Control Cooling Fan

<b>Comunication Method</b>	<b>RS485</b>	<b>Remote Control</b>	<b>Optional</b>
----------------------------	--------------	-----------------------	-----------------

<b>Operating Ambient Temperature</b>	<b>-15°C - 50°C</b>	<b>Own Consumption</b>	<b>&lt; 20mA</b>
--------------------------------------	---------------------	------------------------	------------------

<b>Storage Temperature</b>	<b>-20°C - 60°C</b>	<b>Protection Grade</b>	<b>IP20</b>
----------------------------	---------------------	-------------------------	-------------

<b>Dimensions</b>	<b>400x300x162mm</b>	<b>530x410x162mm</b>
-------------------	----------------------	----------------------

<b>Net Weight</b>	<b>10kgs</b>	<b>11kgs</b>	<b>14.5kgs</b>	<b>17.5kgs</b>
-------------------	--------------	--------------	----------------	----------------

<b>Packing</b>	<b>460x380x210mm/1pc</b>		<b>600x490x210mm/ 1pc</b>	
	<b>11kgs/1pc</b>	<b>12kgs/1pc</b>	<b>16kgs/1pc</b>	<b>19kgs/1pc</b>

**Warranty** 2 years

### WD+ 12V series Battery

Suitable for

Uninterruptable Power Supply(UPS)

Solar Wind Energy System

Telecommunication Equipment

Alarm and Security System

DC Power Supply



### Main Specification

Models NO.	Voltage&Capacity (AH / 10Hour)	Length (mm)	Width (mm)	Height (mm)	Gross Weight (KGS)
------------	-----------------------------------	-------------	------------	-------------	-----------------------

#### AGM Battery

WDA24-12	12V 24AH	176	166	125	7
WDA50-12	12V 50AH	229	138	228	14
WDA65-12	12V 65AH	350	166	174	21
WDA100-12	12V 100AH	331	176	214	30
WDA120-12	12V 120AH	406	174	238	35
WDA150-12	12V 150AH	483	170	240	46
WDA200-12	12V 200AH	522	240	245	57
WDA250-12	12V 250AH	522	240	245	65

#### GEL Battery

WDG24-12	12V 24AH	176	166	125	7.5
WDG50-12	12V 50AH	229	138	228	14
WDG65-12	12V 65AH	350	166	174	21
WDG100-12	12V 100AH	331	176	214	30
WDG120-12	12V 120AH	406	174	240	35
WDG150-12	12V 150AH	483	170	240	46
WDG200-12	12V 200AH	522	240	245	58
WDG250-12	12V 250AH	522	240	245	66

### WDR SERIES ROOF BALLAST MOUNTING(EAST-WEST)

**Features:**

Applicable for various modules;

Various tilt angles designed for specific projects;

Easy & fast installation;

Ballast blocks applied without damage of rooftop, thermal insulation achieved; for penetration-allowed rooftops, fixing with expansion/ chemical bolts.



### Main Specification

Installation Site	Flat Roof	Body Material	Aluminum-6005-T5
Tilt Angle	0-45°	Bolt Material	SUS304
Max Wind Force	≦ 60m/s	Base Material	Q235/Cement
Snow Load	≦ 1.4KN/m <sup>2</sup>	Surface Treatment	Anodized
Module Directions	Landscape	Warranty	10 Years
Foundation	Ballast Concrete		

Design Standard AS/NZ 1170,JIS C8955 2017,DIN 1055 ,IBC 2006

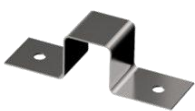
### Installation Photos



Mid Clamp



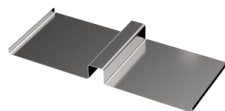
End Clamp



End-Clamp



Expansion Bolt



Ballast-Plate



Rail



Front Base



Back Support

### WDM SERIES METAL ROOF MOUNTING

**Features:**

**Applicable for Different Roofs**

Design project by project, selecting configuration mounting system components flexibly.

**Save Installation Time and Cost**

Pre-assembled components and clear installation manual are supplied to save the onsite installation time and Cost, lead to better Rol .

**Compatible to Different Types of Solar Modules**

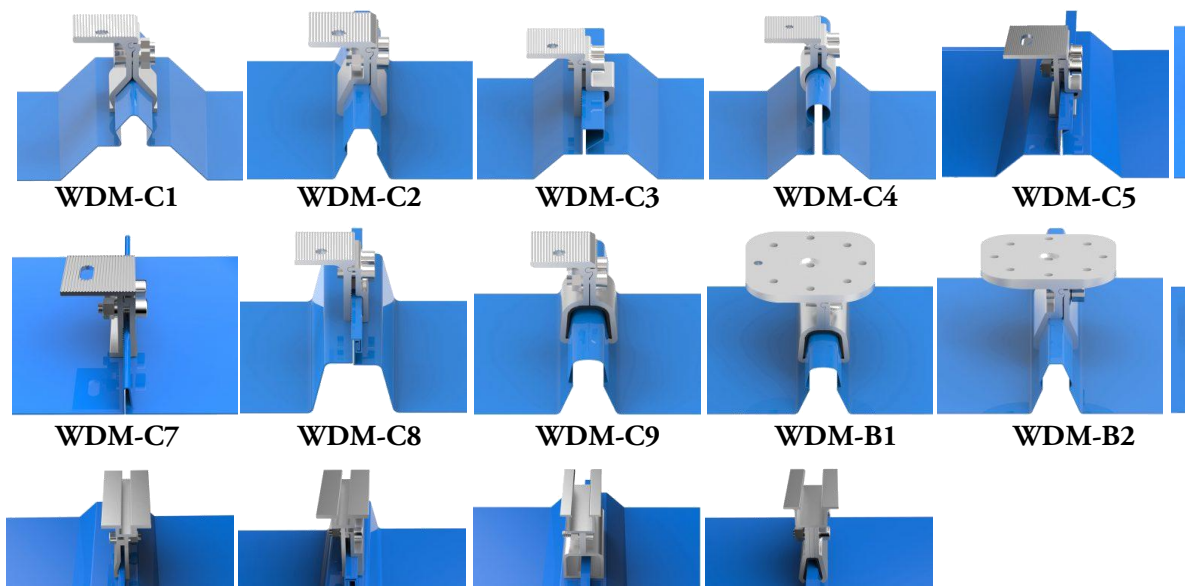
Compatible to most kinds of framed 60-cell, 72-ell, half-cut cells modules and frameless modules.



### Main Specification

Installation Site	Metal Roof	Body Material	Aluminum
Tilt Angle	Parallel to Existing Roof	Bolt Material	SUS
Max Wind Force	≅ 60m/s	Base Material	Q235/C
Snow Load	≅ 1.4KN/m <sup>2</sup>	Surface Treatment	Anod
Roof Type	Standing Seam	Warranty	10 Y
Module Directions	Portrait	Design Standard	AS/NZ 1170,JI DIN 1055
	Landscape		

### Clamps





WDM-D1

WDM-D2

WDM-D3

WDM-D4

Copy Right 2021 @ WD+ Energy

**WEDOP**



# SECTION SHEET



1-6005-T5

304

Cement

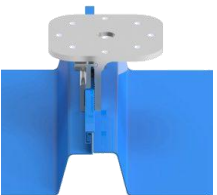
lized

7ears

AS C8955 2017,  
IBC 2006



WDM-C6



WDM-B3



### WDT SERIES TILE ROOF MOUNTING

**Features:**

**Applicable for Different Roofs**

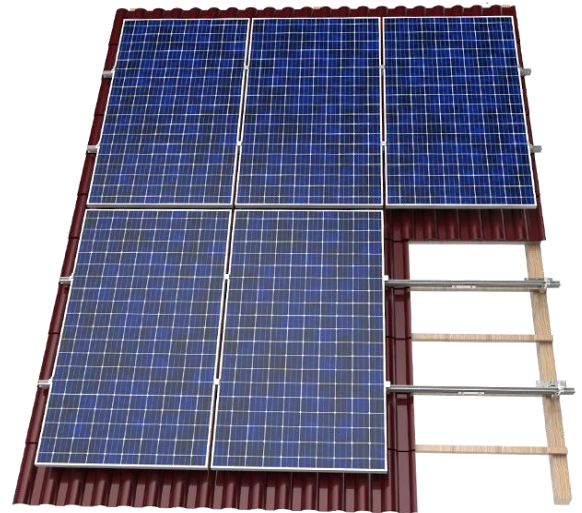
Design project by project, selecting configuration mounting system components flexibly.

**Save Installation Time and Cost**

Pre-assembled components and clear installation manual are supplied to save the onsite installation time and Cost, lead to better Rol .

**Compatible to Different Types of Solar Modules**

Compatible to most kinds of framed 60-cell, 72-ell, half-cut cells modules and frameless modules.



### Main Specification

Installation Site	Roof	Body Material	Aluminum-6005-T5
Tilt Angle	Parallel to Exsting Roof	Bolt Material	SUS304
Max Wind Force	≅ 60m/s	Base Material	Q235/Cement
Snow Load	≅ 1.4KN/m <sup>2</sup>	Surface Treatment	Anodized
Roof Type	Tile Roof	Warranty	10 Years
Module Directions	Portrait	Design Standard	AS/NZ 1170,JIS C8955 2017, DIN 1055 ,IBC 2006
	Landscape		

### Component



WDT-1



WDT-2



WDT-3



WDT-4



WDT-5



WDT-6



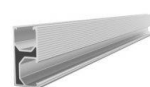
End Clamp



Mid Clamp



Rail Splice



Rail



Wooden Screw



Self Tapping Screw



### WDF SERIES FLAT ROOF MOUNTING

**Features:**

**Applicable for Different Roofs**

Design project by project, selecting configuration mounting system components flexibly.

**Save Installation Time and Cost**

Pre-assembled components and clear installation manual are supplied to save the onsite installation time and Cost, lead to better Rol .

**Compatible to Different Types of Solar Modules**

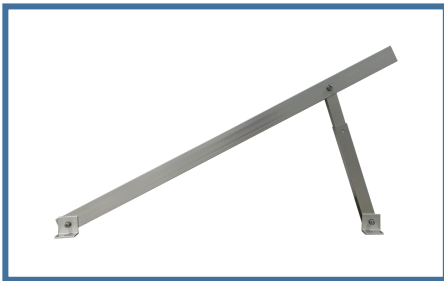
Compatible to most kinds of framed 60-cell, 72-ell, half-cut cells modules and frameless modules.



### Main Specification

Installation Site	Roof	Body Material	Aluminum-6005-T5
Tilt Angle	5-60°C	Bolt Material	SUS304
Max Wind Force	≅ 60m/s	Base Material	Q235/Cement
Snow Load	≅ 1.4KN/m <sup>2</sup>	Surface Treatment	Anodized
Roof Type	Flat Roof	Warranty	10 Years
Module Directions	Portrait	Design Standard	AS/NZ 1170,JIS C8955 2017, DIN 1055 ,IBC 2006
	Landscape		

### Pre-assembled Rack



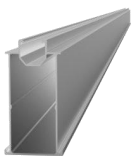
A Type



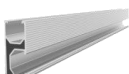
AT Type



T Type



Rail



Rail



Rail Splice



Rail Clamp



Mid Clamp



End Clamp

### WDF SERIES FARM SOLAR MOUNTING(AGRICULTURAL GREENHOUSE)

#### Features:

**Dual-Use of Land Improve the Economic Benefit**

Install solar projects above the planting land, achieving the dual-use of land to improve the economic benefit.

**Create Different Growing Conditions for Different Plants**

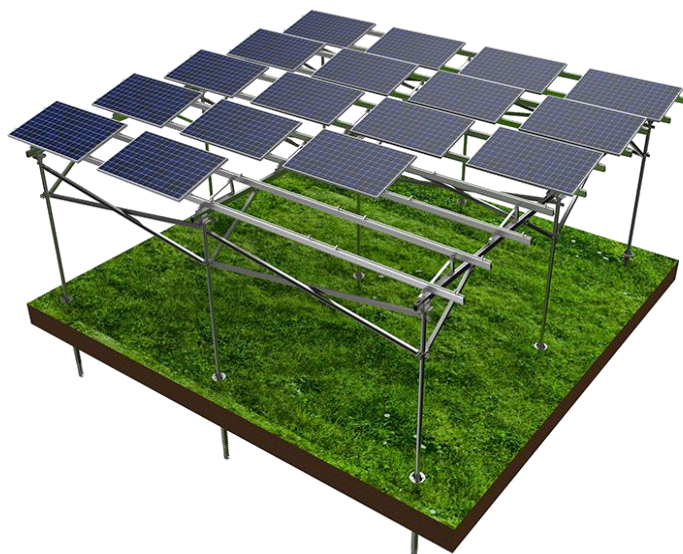
To satisfy the different light exposure requirements of varied plants, the system can be installed with different transmittance solar modules or different solar module arrays.

**Pre-assembled Components Save Onsite Installation Time**

Solution design case by case, most components pre-assembled in factory, no onsite cut and drill request, saving the onsite installation time and cost.

**No Drill on Portrait Beam**

It improves the strength of the system to fix the portrait beam onto the post by special designed clamps, with force at the same direction of the gravity.



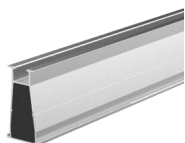
#### Main Specification

Installation Site	Ground	Body Material	Aluminum-6005-T5
Tilt Angle	5-30°C	Bolt Material	SUS304
Max Wind Force	≅ 60m/s	Base Material	Q235/Cement
Snow Load	≅ 1.4KN/m <sup>2</sup>	Surface Treatment	Anodized
Ground Clearance	2000 mm≥	Warranty	10 Years
Module Directions	Portrait	Design Standard	AS/NZ 1170, JIS C8955 2017, DIN 1055 , IBC 2006
	Landscape		

#### Component



End Clamp



Beam



Triangle Bracket



Vertical Beam



Transverse Bracing



Ground Screw

### WDG SERIES GROUND MOUNTING SYSTEM

**Features:**

**Pre-assembly:**

High pre-assembly before shipment, greatly reducing construction cost and construction time. The control of every part will greatly improve the construction quality.

**Flexible Design:**

The structure and the amount of material use can be flexibly adjusted and designed according to the site's wind speed, snow load, etc to ensure the safety of support system.



**Foundation:**

Ground screw or cement.

### Main Specification

Installation Site	Ground	Body Material	Aluminum-6005-T5
Tilt Angle	0-45°	Bolt Material	SUS304
Max Wind Force	≦ 60m/s	Base Material	Q235/Cement
Snow Load	≦ 1.4KN/m <sup>2</sup>	Surface Treatment	Anodized
Ground Clearance	≥300 mm	Warranty	10 Years
Module Directions	Portrait	Foundation	Concrete
	Landscape		Ground Screw

Design Standard AS/NZ 1170,JIS C8955 2017, DIN 1055 ,IBC 2006

### Pre-assembled Rack



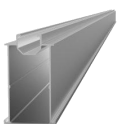
A Type



N Type



M Type



Rail



Rail Clamp



Mid Clamp



End Clamp



Hole Holder



Ground Screw

### WDS SERIES SINGLE STEEL PILLAR CARPORT MOUNTING

#### Features:

#### Pre-assembled Components Save Installation Time

Solution design case by case, most components pre-assembled in factory, no onsite cut and drill request, saving the onsite installation time and cost.

#### Flexibility and Adjustability

The structure can be adjusted with some tolerance with east-west, west-south and south-north directions, assuring flexible on-site installation to achieve best yield for solar modules.

#### Flexibility and Adjustability

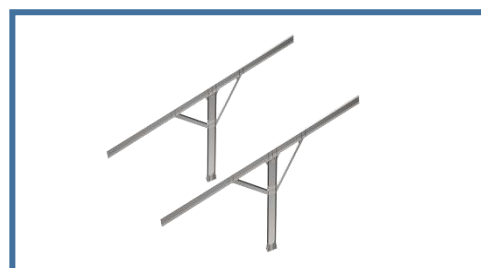
Compatible to most kinds of framed 60-cell, 72-cell, half-cut cells modules and frameless modules.



### Main Specification

Installation Site	Ground	Body Material	Aluminum
Tilt Angle	Parallel to Existing Roof	Bolt Material	SUS
Max Wind Force	$\leq 60\text{m/s}$	Base Material	Q235/C
Snow Load	$\leq 1.4\text{KN/m}^2$	Surface Treatment	Anod
Roof Type	Ground Carport	Warranty	10 Y
Module Directions	Portrait	Design Standard	AS/NZ 1170, JIS DIN 1055
	Landscape		

### Component





**End Clamp**



**Mid Clamp**



**Hole Holder**



**Rail**



**Stell Beam**

Copy Right 2021 @ WD+ Energy

**WEDOP**

# CTION SHEET



1-6005-T5

304

Cement

lized

Years

S C8955 2017,  
,IBC 2006

Double Arm





**Anchor Bolt**



### WDM SERIES MULTIPLE STEEL PILLAR CARPORT MOUNTING

**Features:**

**Pre-assembled Components Save Installation Time**

Solution design case by case, most components pre-assembled in factory, no onsite cut and drill request, saving the onsite installation time and cost.

**Flexibility and Adjustability**

The structure can be adjusted with some tolerance with east-west, west-south and south-north directions, assuring flexible on-site installation to achieve best yield for solar modules.

**Flexibility and Adjustability**

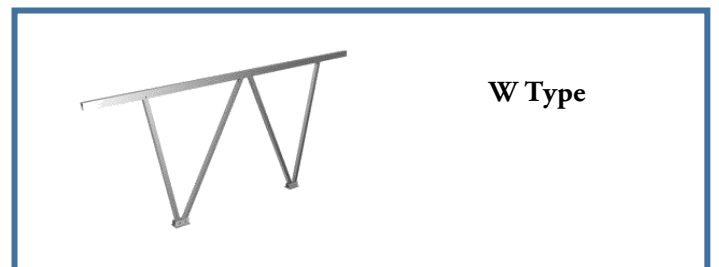
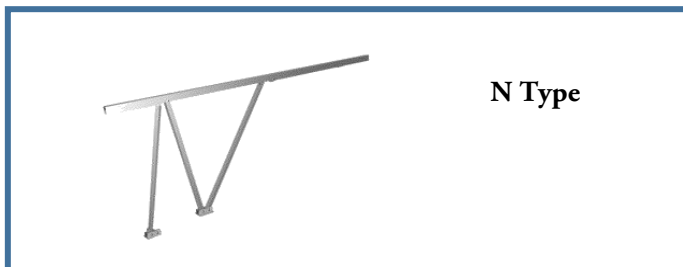
Compatible to most kinds of framed 60-cell, 72-cell, half-cut cells modules and frameless modules.



### Main Specification

Installation Site	Ground	Body Material	Aluminum-6005-T5
Tilt Angle	Parallel to Existing Roof	Bolt Material	SUS304
Max Wind Force	≅ 60m/s	Base Material	Q235/Cement
Snow Load	≅ 1.4KN/m <sup>2</sup>	Surface Treatment	Anodized
Roof Type	Ground Carport	Warranty	10 Years
Module Directions	Portrait	Design Standard	AS/NZ 1170, JIS C8955 2017, DIN 1055, IBC 2006
	Landscape		

### Component



End Clamp



Mid Clamp



Hole Holder



Rail



Stell Beam

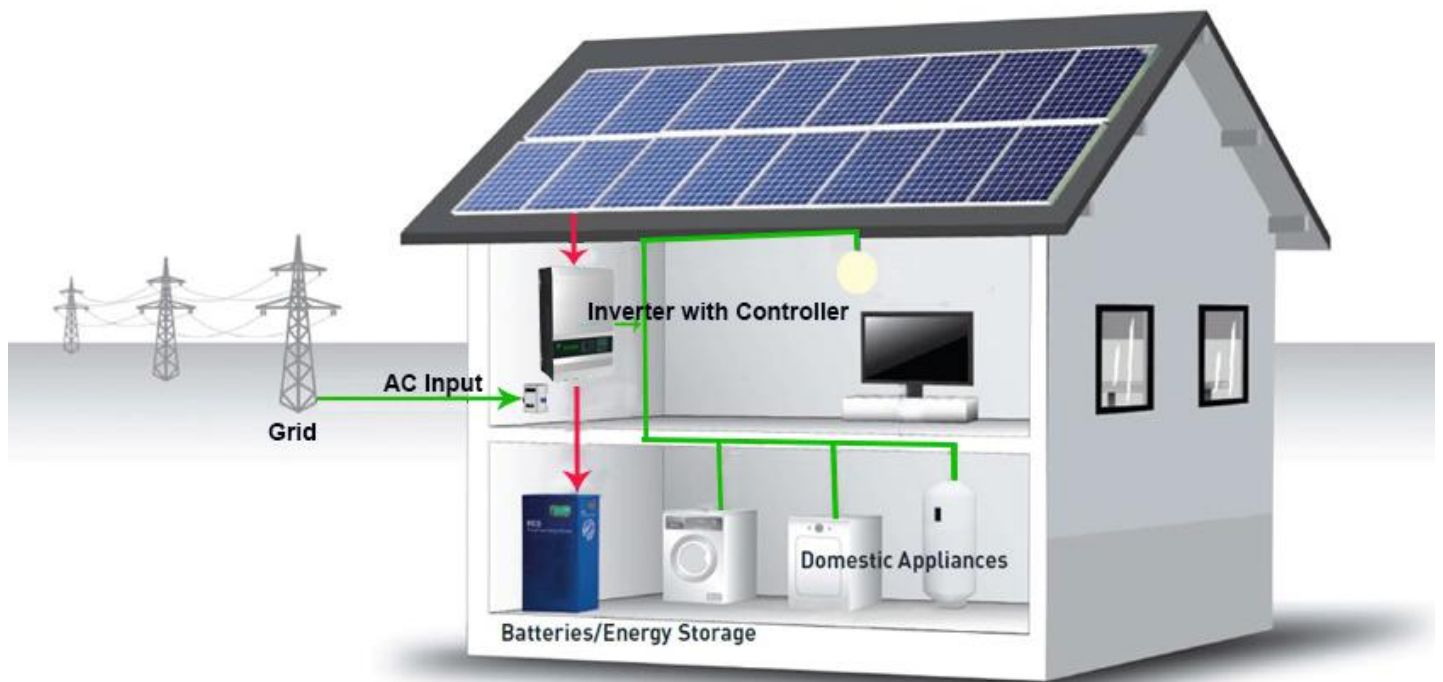


Anchor Bolt



### Off Grid Solar System

Off-grid Solar system is suitable for regions without grid connection or power instability . Off grid solar energy systems including solar module ,storage battery ,controller ,inverter ,mounting brackets etc .



### MAIN SPECIFICATION

Model	WDS1KW-OFF	WDS2KW-OFF	WDS3KW-OFF	WDS4KW-OFF	WDS5KW-OFF
Solar Panel	3 Pieces	6 Pieces	8 Pieces	11 Pieces	14 Pieces
Off Grid Inverter	1KW	2KW	3KW	4KW	5KW
DC Combiner Box	1 Set	1 Set	1 Set	1 Set	1 Set
Storage Battery	1 Piece	1 Piece	1 Piece	1 Piece	1 Piece
PV Cable 4MM2	100 Meter	100 Meter	100 Meter	100 Meter	100 Meter
Mounting Brackets	1 Set	1 Set	1 Set	1 Set	1 Set
MC4 Connector	10 Pieces	10 Pieces	20 Pieces	20 Pieces	20 Pieces

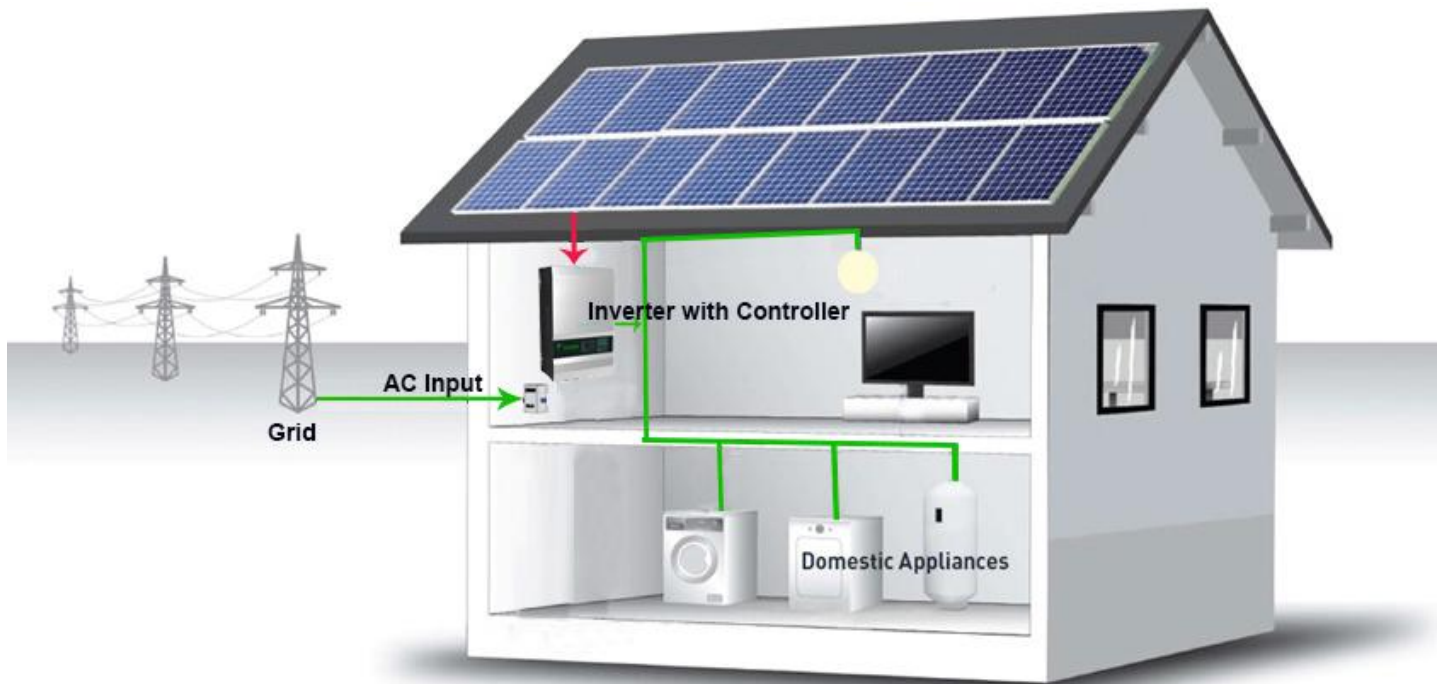
System Vac 110V,120V, 220-240V, 110/220V, 120/240V

### Remarks:

The Above System Configuration For Initial Designing, The System Configuration Are Subject to Changing Depends on Your Final Installation Conditions and Requirements.For More Details, Please Send Your Inquiry To WD<sup>+</sup> Energy Team. Thank You!

### On Grid Solar System

On-grid Solar system is consists of pv modules, on grid inverters, pv cables, combiner boxes etc. it can be for home use, commercial use and also factory use.



#### MAIN SPECIFICATION

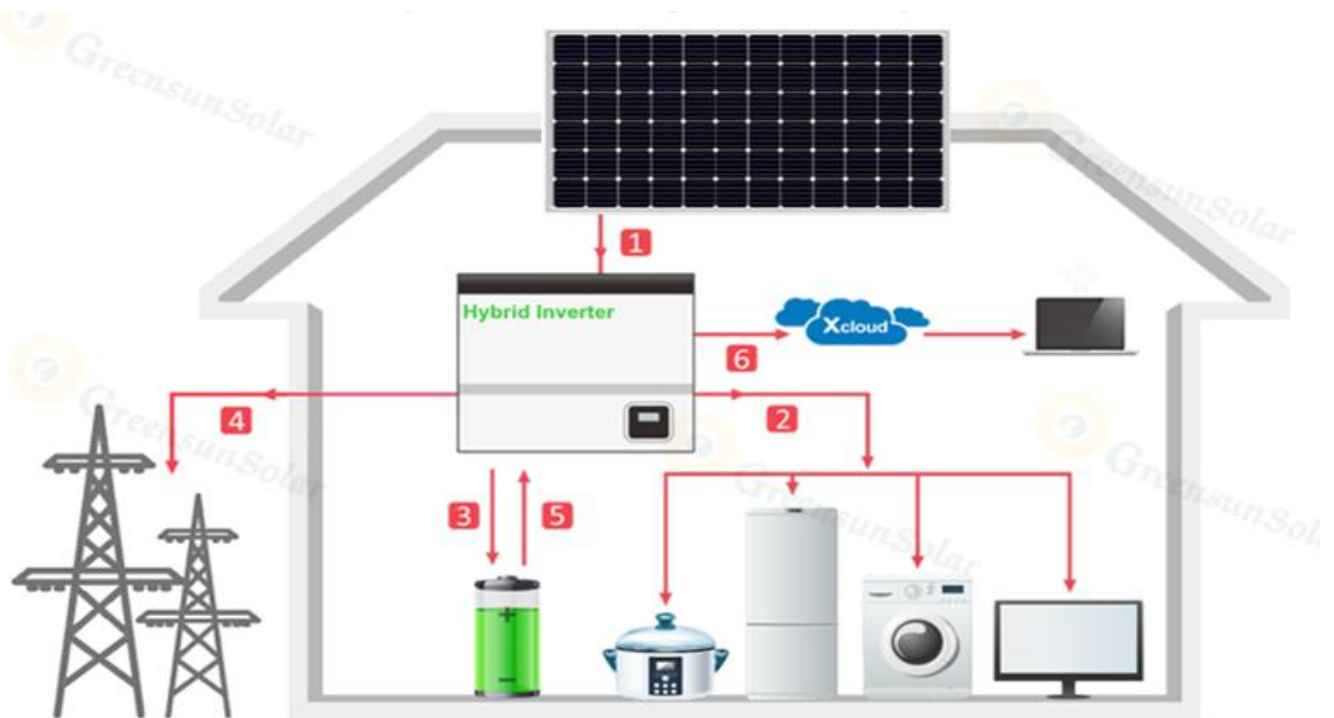
Model	WDS1KW-ON	WDS2KW-ON	WDS3KW-ON	WDS4KW-ON	WDS5KW-ON
Solar Panel	3 Pieces	6 Pieces	8 Pieces	11 Pieces	14 Pieces
Off Grid Inverter	1KW	2KW	3KW	4KW	5KW
DC Combiner Box	1 Set	1 Set	1 Set	1 Set	1 Set
Storage Battery	Customized	Customized	Customized	Customized	Customized
PV Cable 4MM2	100 Meter	100 Meter	100 Meter	100 Meter	100 Meter
Mounting Brackets	1 Set	1 Set	1 Set	1 Set	1 Set
MC4 Connector	10 Pieces	10 Pieces	20 Pieces	20 Pieces	20 Pieces
System Vac	110V,120V, 220-240V, 110/220V, 120/240V				

#### Remarks:

The Above System Configuration For Initial Designing, The System Configuration Are Subject to Changing Depends on Your Final Installation Conditions and Requirements.For More Details, Please Send Your Inquiry To WD<sup>+</sup> Energy Team. Thank You!

### Hybrid Solar System

Hybrid solar systems has mainly four kinds: On grid and off grid solar energy storage system, on grid solar energy storage system, off grid solar energy



#### MAIN SPECIFICATION

Model	WDS1KW-H	WDS2KW-H	WDS3KW-H	WDS4KW-H	WDS5KW-H
Solar Panel	3 Pieces	6 Pieces	8 Pieces	11 Pieces	14 Pieces
Off Grid Inverter	1KW	2KW	3KW	4KW	5KW
DC Combiner Box	Customized	Customized	Customized	Customized	Customized
Storage Battery	Customized	Customized	Customized	Customized	Customized
PV Cable 4MM2	100 Meter	100 Meter	100 Meter	100 Meter	100 Meter
Mounting Brackets	Customized	Customized	Customized	Customized	Customized
MC4 Connector	10 Pieces	10 Pieces	20 Pieces	20 Pieces	20 Pieces

System Vac 110V,120V, 220-240V, 110/220V, 120/240V

#### Remarks:

The Above System Configuration For Initial Designing, The System Configuration Are Subject to Changing Depends on Your Final Installation Conditions and Requirements.For More Details, Please Send Your Inquiry To WD<sup>+</sup> Energy Team. Thank You!