

# TEST REPORT

**Report No.:** BCTC2010001623R

---

**Applicant:** Shenzhen JiaoYang Industrial Co. Ltd.

---

**Product Name:** plush toy

---

**Tested Date:** Oct. 22, 2020 - Oct. 28, 2020

---

**Issued Date:** Oct. 29, 2020

---

**Shenzhen BCTC Testing Co., Ltd.**



Product Name	plush toy
Applicant	Shenzhen JiaoYang Industrial Co. Ltd.
Address	3rd Floor, Building A, No. 10, Longshan 4th Road, Xinsheng Community, Longgang Street, Longgang District, Shenzhen
Manufacturer	Shenzhen JiaoYang Industrial Co. Ltd.
Address	3rd Floor, Building A, No. 10, Longshan 4th Road, Xinsheng Community, Longgang Street, Longgang District, Shenzhen
Test age group	0+
Sample Received Date	Oct. 22, 2020
Test Type	Entrustment Test
Test Standard and Requirements	European Standard on Safety of Toys - EN 71-1:2014+A1:2018 Mechanical and Physical Properties - EN 71-2:2011+A1:2014 Flammability of Toys - EN 71-3:2019 Migration of certain elements
Test Result	The samples were tested according to the entrusted requirements and test standard, and the test items of the test samples were qualified.
Tested by: <hr/> Liseo	Approved by: <hr/> Saher Chen  (Official Sealed )

**Tested Sample/Part Description:**

- 1 Purple cloth, pink cloth and orange cloth mixed
- 2 Green cloth, yellow cloth and light blue cloth mixed

**Test Result(s):**
**◆ Mechanical and physical properties**
**As specified in European Standard on Safety of Toys EN 71 part 1: 2014+A1:2018.**

Clause	Description	Assessment
4	General requirements	
4.1	Material cleanliness	Pass
4.7	Edges	Pass
4.8	Points and metallic wires	Pass
4.9	Protruding parts	Pass
5.1	General requirements	
5.1a	Small part requirement on toys & removable Components (Test method 8.2)	Pass
5.1b	Torque test (Test method 8.3)	Pass
	Tension test (Test method 8.4)	Pass
	Drop test (Test method 8.5)	Pass
	Compression test (Test method 8.8)	Pass
	Sharp edge (Test method 8.11)	Pass
	Sharp point (Test method 8.12)	Pass
5.2	Soft-filled toys and soft-filled parts of a toy	Pass

**Note:**

-Only applicable clause(s) was/ were shown.

◆ **Flammability of toys**

As specified in European Standard on Safety of Toys EN 71 part 2:2011+A1:2014.

Clause	Description	Assessment
4.1	General	Pass
4.5	Soft-filled toys	Pass
	A: Soft stuffed toys with a maximum size of less than 520mm	Pass

**Note:**

4.1 The following materials shall not be used in the manufacture of toys:

- Celluloid (cellulose nitrate), except when used in varnish, paint or glue, or in balls of the type used for table tennis or similar games, and materials with the same behaviour in fire as celluloid. Specific materials to which the test flame is applied in order to check compliance of the toy with requirements in 4.2 to 4.5 are considered to comply with this requirement if the toy meets its appropriate requirements in 4.2 to 4.5;
- Materials with a piled surface which produce surface flash on the approach of a flame. Piled surfaces showing no momentary area of flame over the area of the piled surface remote from the test flame are considered to meet this requirement;
- Highly flammable solids.

In addition, toys shall not contain flammable gases, highly flammable liquids, flammable liquids, flammable gels except as provided for below:

- Flammable liquids, flammable gels and preparations supplied in sealed containers having a maximum volume of 15 ml per container;
- Highly flammable liquids and flammable liquids being entirely retained within a porous material in capillary channels of writing instruments;
- Flammable liquids with a viscosity greater than  $260 \times 10^{-6} \text{m}^2/\text{s}$  corresponding to a flow time of more than 38 s when determined in accordance with EN ISO 2431 using cup No. 6;
- Highly flammable liquids contained in toys covered in EN 71-5.

NOTE: Different legal requirements may exist in non-EU countries.

4.5 The requirements of this clause do not apply to toys with a maximum dimension of 150 mm or less. A toy shall be tested as supplied, including any clothing present with the toy and, if considered to be more onerous, with the clothes removed if removal can be accomplished without damage to the clothes or toy. When tested in accordance with 5.5, the rate of spread of flame on the surface shall not be more than 30 mm/s or shall self-extinguish.

**◆ Migration of certain elements**

As specified in European standard on safety of toys EN 71-3:2019 - Migration of certain elements, acid extraction method was used and toxic elements content were determined by ICP-OES, ICP-MS, IC-ICP-MS and GC-MS.

**For Category III materials: Scraped off materials**
**Test Results:**

Code	Soluble Element	Results (mg/kg)		MDL (mg/kg)	Limit (mg/kg)		
		1	2		Category I	Category II	Category III
					dry, brittle, powder-like or pliable toy material	liquid or sticky toy material	scraped-off toy material
1	Al	5	5	0.073	5625	1406	70000
2	Sb	N.D.	N.D.	0.014	45	11.3	560
3	As	N.D.	N.D.	0.027	3.8	0.9	47
4	Ba	N.D.	N.D.	0.027	1500	375	18750
5	B	N.D.	N.D.	0.039	1200	300	15000
6	Cd	N.D.	N.D.	0.059	1.3	0.3	17
7	Cr <sup>3+</sup>	N.D.	N.D.	0.064	37.5	9.4	460
8	Cr <sup>6+</sup>	N.D.	N.D.	0.026	0.02	0.005	0.053
9	Co	N.D.	N.D.	0.019	10.5	2.6	130
10	Cu	N.D.	N.D.	0.010	622.5	156	7700
11	Pb	N.D.	N.D.	0.061	2.0	0.5	23
12	Mn	N.D.	N.D.	0.050	1200	300	15000
13	Hg	N.D.	N.D.	0.010	7.5	1.9	94
14	Ni	N.D.	N.D.	0.042	75	18.8	930
15	Se	N.D.	N.D.	0.147	37.5	9.4	460
16	Sr	N.D.	N.D.	0.067	4500	1125	56000
17	Sn	N.D.	N.D.	0.110	15000	3750	180000
18	Organic tin	N.D.	N.D.	0.120	0.9	0.2	12
19	Zn	N.D.	N.D.	0.097	3750	938	46000

**Note:**

-MDL = Method Detection Limit

-N.D. = Not Detected (<MDL)

-mg/kg = ppm = parts per million

-Results shown are of the adjusted analytical results

-The migration of organic tin is expressed as tributyltin (TBT). where the tin content exceeded the limit of organic tin, eleven organic tins listed in table were determined by GC-MS and the client should be noted there are other organic tins may be present in toy materials.

Organic tins tested under EN 71-3:2019:

Methyl tin (MeT), Butyl tin (BuT), Dibutyl tin (DBT), Tributyl tin (TBT), Tetrabutyl tin (TeBT), n-Octyl tin (MOT), Di-n-octyl tin (DOT), Di-n-propyl tin (DProT), Diphenyl tin (DPhT), Triphenyl tin (TPHT), Dimethyltin Dimethyl tin (DMT)

**Photograph of Sample**



**Fig.1**



Fig.2

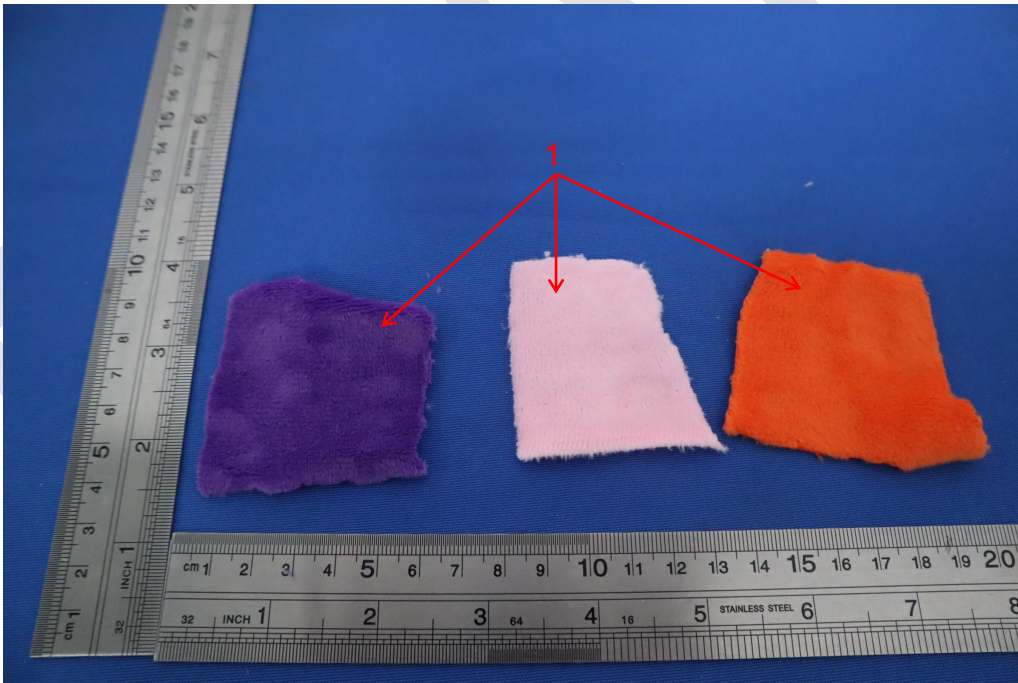


Fig.3

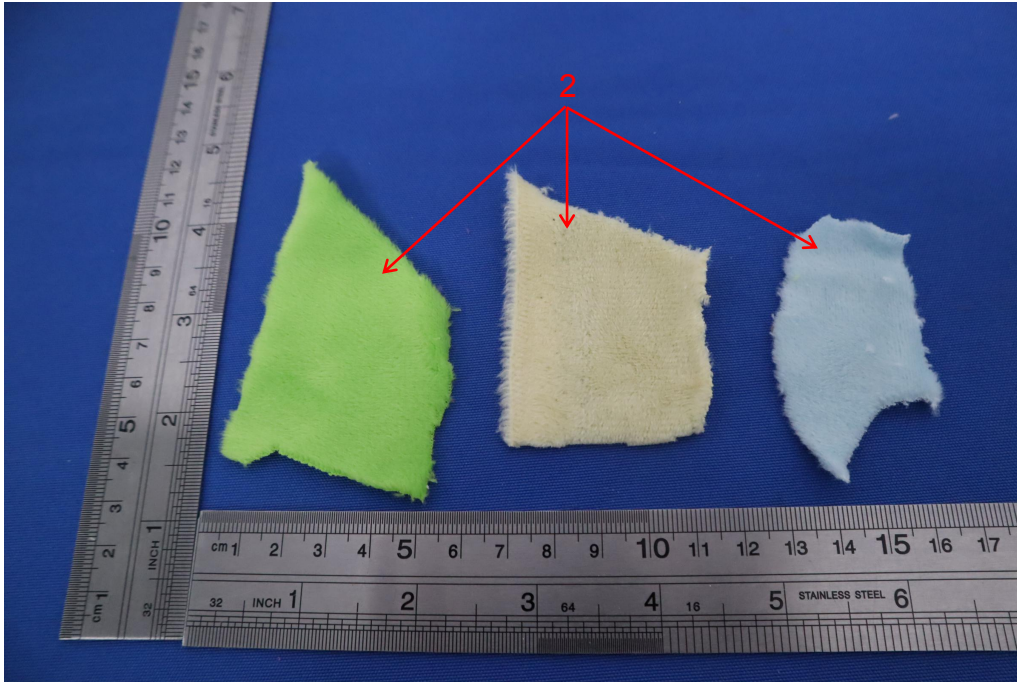


Fig.4

DRAFT



## STATEMENT

1. The equipment lists are traceable to the national reference standards.
2. The test report can not be partially copied unless prior written approval is issued from our lab.
3. The test report is invalid without stamp of laboratory.
4. The test report is invalid without signature of person(s) testing and authorizing.
5. The test process and test result is only related to the Unit Under Test.
6. The quality system of our laboratory is in accordance with ISO/IEC17025.
7. If there is any objection to report, the client should inform issuing laboratory within 15 days from the date of receiving test report.

Address:

1-2F, East of B Building, Pengzhou Industrial Park, Fuyuan 1st Road, Qiaotou, Fuyong Street, Bao'an District, Shenzhen, Guangdong, China

TEL : 400-788-9558

P. C.: 518103

FAX : 0755-33229357

Website : <http://www.bctc-lab.com>

E-Mail : [bctc@bctc-lab.com.cn](mailto:bctc@bctc-lab.com.cn)

\*\*\*\*\* END \*\*\*\*\*