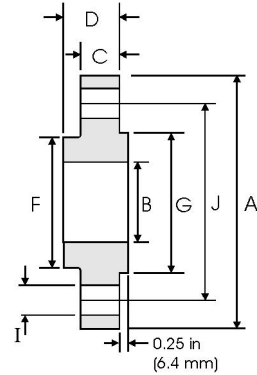


Slip-On Flanges - ANSI-B16.5 400lbs



Pipe		Flange Data				Hub	Raised Face	Drilling Data			Weight
Nominal Pipe Size		A	B	C	D	F	G	H	I	J	
	Outside Diameter	Overall Diameter	Inside Diameter	Flange Thickness min	Overall Length	Hub Diameter	Face Diameter	Number of Holes	Bolt Hole Diameter	Diameter of Circle of Holes	kg/ piece
	in mm	in mm	in mm	in mm	in mm	in mm	in mm		in mm	in mm	
1/2	0.840	3.750	0.880	0.560	0.880	1.500	1.380	4	0.620	2.620	0.74
	21.30	95.30	22.40	14.20	22.40	38.10	35.10		15.70	66.55	
3/4	1.050	4.620	1.090	0.620	1.000	1.880	1.690	4	0.750	3.250	1.27
	26.70	117.3	27.70	15.70	25.40	47.70	42.90		19.10	82.50	
1	1.315	4.880	1.360	0.690	1.060	2.120	2.000	4	0.750	3.500	1.52
	33.40	124.0	34.50	17.50	26.90	53.80	50.80		19.10	88.90	
1 1/4	1.660	5.250	1.700	0.810	1.120	2.500	2.500	4	0.750	3.880	2.03
	42.20	133.4	43.20	20.60	28.40	63.50	63.50		19.10	98.60	
1 1/2	1.900	6.120	1.950	0.880	1.250	2.750	2.880	4	0.880	4.500	2.96
	48.30	155.4	49.50	22.40	31.75	69.85	73.15		22.40	114.3	
2	2.375	6.500	2.440	1.000	1.440	3.310	3.620	8	0.750	5.000	3.62
	60.30	165.1	62.00	25.40	36.60	84.00	91.90		19.10	127.0	
2 1/2	2.875	7.500	2.940	1.120	1.620	3.940	4.120	8	0.880	5.880	5.28
	73.00	190.5	74.70	28.40	41.10	100.0	104.6		22.40	149.4	
3	3.500	8.250	3.570	1.250	1.810	4.620	5.000	8	0.880	6.620	7.00
	88.90	209.6	90.70	31.75	46.00	117.3	127.0		22.40	168.1	
3 1/2	4.000	9.000	4.070	1.380	1.940	5.250	5.500	8	1.000	7.250	8.84
	101.6	228.6	103.4	35.10	49.30	133.3	139.7		25.40	184.2	
4	4.500	10.00	4.570	1.380	2.000	5.750	6.190	8	1.000	7.880	11.1
	114.3	254.0	116.1	35.10	50.80	146.0	157.2		25.40	200.1	
5	5.563	11.00	5.660	1.500	2.120	7.000	7.310	8	1.000	9.250	13.9
	141.3	279.4	143.8	38.10	53.80	177.8	185.7		25.40	234.9	
6	6.625	12.50	6.720	1.620	2.250	8.120	8.500	12	1.000	10.62	18.3
	168.3	317.5	170.7	41.10	57.15	206.2	215.9		25.40	269.7	
8	8.625	15.00	8.720	1.880	2.690	10.25	10.62	12	1.120	13.00	28.6
	219.1	381.0	221.5	47.80	68.30	260.3	269.7		28.40	330.2	
10	10.75	17.50	10.88	2.120	2.880	12.62	12.75	16	1.250	15.25	39.2
	273.0	444.5	276.3	53.80	73.15	320.5	323.9		31.75	387.3	
12	12.75	20.50	12.88	2.250	3.120	14.75	15.00	16	1.380	17.75	57.0
	323.8	520.7	327.1	57.15	79.25	374.6	381.0		35.10	450.8	
14	14.00	23.00	14.14	2.380	3.310	16.75	16.25	20	1.380	20.25	79.1
	355.6	584.2	359.1	60.05	84.10	425.4	412.8		35.10	514.4	
16	16.00	25.50	16.16	2.500	3.690	19.00	18.50	20	1.500	22.50	101
	406.4	647.7	410.5	63.50	93.70	482.6	469.9		38.10	571.5	
18	18.00	28.00	18.18	2.620	3.880	21.00	21.00	24	1.500	24.75	123
	457.2	711.2	461.8	66.55	98.60	533.4	533.4		38.10	628.7	
20	20.00	30.50	20.20	2.750	4.000	23.12	23.00	24	1.620	27.00	146
	508.0	774.7	513.1	69.85	101.6	587.2	584.2		41.10	685.8	
24	24.00	36.00	24.25	3.000	4.500	27.62	27.25	24	1.880	32.00	219
	609.6	914.4	616.0	76.20	114.3	701.5	692.2		47.80	812.8	

Notes

- Weights are based on manufacturer's data and are approximate.