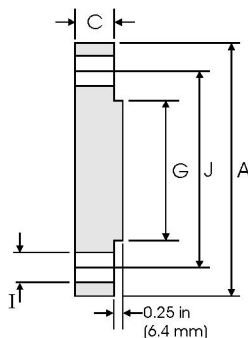
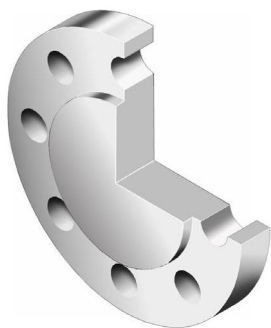




Blind Flanges - ANSI B16.5 Class 600 lbs



Pipe		Flange Data			Raised Face	Drilling Data		Weight
Nominal Pipe Size		A	C	G	H	I	J	
	Outside Diameter	Overall Diameter	Flange Thickness min	Face Diameter	Number of Holes	Bolt Hole Diameter	Diameter of Circle of Holes	kg/piece
	in mm	in mm	in mm	in mm		in mm	in mm	
1/2	0.840 21.30	3.750 95.20	0.560 14.20	1.380 35.10	4	0.620 15.70	2.620 66.55	0.76
3/4	1.050 26.70	4.620 117.3	0.620 15.70	1.690 42.90	4	0.750 19.10	3.250 82.60	1.28
1	1.315 33.40	4.880 123.9	0.690 17.50	2.000 50.80	4	0.750 19.10	3.500 88.90	1.60
1 1/4	1.660 42.20	5.250 133.3	0.810 20.60	2.500 63.50	4	0.750 19.10	3.880 98.60	2.23
1 1/2	1.900 48.30	6.120 155.4	0.880 22.30	2.880 73.15	4	0.880 22.40	4.500 114.3	3.25
2	2.375 60.30	6.500 165.1	1.000 25.40	3.620 91.90	8	0.750 19.10	5.000 127.0	4.15
2 1/2	2.875 73.00	7.500 190.5	1.120 28.40	4.120 104.6	8	0.880 22.40	5.880 149.4	6.13
3	3.500 88.90	8.250 209.5	1.250 31.70	5.000 127.0	8	0.880 22.40	6.620 168.1	8.44
3 1/2	4.000 101.6	9.000 228.6	1.380 35.00	5.500 139.7	8	1.000 25.40	7.250 184.2	11.0
4	4.500 114.3	10.75 273.1	1.500 38.10	6.190 157.2	8	1.000 25.40	8.500 215.9	17.3
5	5.563 141.3	13.00 330.2	1.750 44.50	7.310 185.7	8	1.120 28.40	10.50 266.7	29.4
6	6.625 168.3	14.00 355.6	1.880 47.80	8.500 215.9	12	1.120 28.40	11.50 292.1	36.1
8	8.625 219.1	16.50 419.1	2.190 55.60	10.62 269.7	12	1.250 31.75	13.75 349.3	58.9
10	10.75 273.0	20.00 508.0	2.500 63.50	12.75 323.9	16	1.380 35.10	17.00 431.8	97.5
12	12.75 323.8	22.00 558.8	2.620 66.55	15.00 381.0	20	1.380 35.10	19.25 489.0	124
14	14.00 355.6	23.75 603.3	2.750 69.85	16.25 412.8	20	1.500 38.10	20.75 527.1	151
16	16.00 406.4	27.00 685.8	3.000 76.20	18.50 469.9	20	1.620 41.10	23.75 603.3	214
18	18.00 457.2	29.25 743.0	3.250 82.60	21.00 533.4	20	1.750 44.50	25.75 654.1	272
20	20.00 508.0	32.00 812.8	3.500 88.90	23.00 584.2	24	1.750 44.50	28.50 723.9	349
24	24.00 609.6	37.00 939.8	4.000 101.6	27.25 692.2	24	2.000 50.80	33.00 838.2	533

Notes

- Weights are based on manufacturer's data and are approximate.