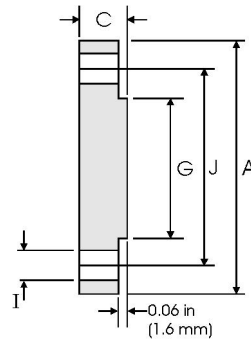
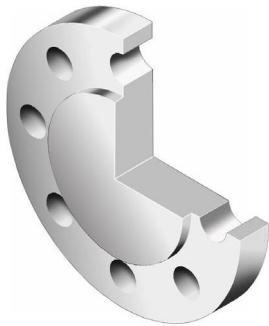




Blind Flanges - ANSI B16.5 Class 300 lbs



Pipe		Flange Data			Raised Face	Drilling Data		Weight
Nominal Pipe Size		A	C	G	H	I	J	
	Outside Diameter	Overall Diameter	Flange Thickness min	Face Diameter	Number of Holes	Bolt Hole Diameter	Diameter of Circle of Holes	kg/piece
	in mm	in mm	in mm	in mm		in mm	in mm	
1/2	0.840 21.30	3.750 95.20	0.560 14.20	1.380 35.10	4	0.620 15.70	2.620 66.55	0.64
3/4	1.050 26.70	4.620 117.3	0.620 15.70	1.690 42.90	4	0.750 19.00	3.250 82.50	1.11
1	1.315 33.40	4.880 123.9	0.690 17.50	2.000 50.80	4	0.750 19.00	3.500 88.90	1.39
1 1/4	1.660 42.20	5.250 133.3	0.750 19.00	2.500 63.50	4	0.750 19.00	3.880 98.50	1.79
1 1/2	1.900 48.30	6.120 155.4	0.810 20.60	2.880 73.15	4	0.880 22.3	4.500 114.3	2.66
2	2.375 60.30	6.500 165.1	0.880 22.30	3.620 91.90	8	0.750 19.10	5.000 127.0	3.18
2 1/2	2.875 73.00	7.500 190.5	1.000 25.40	4.120 104.6	8	0.880 22.30	5.880 149.3	4.85
3	3.500 88.90	8.250 209.5	1.120 28.40	5.000 127.0	8	0.880 22.30	6.620 168.1	6.81
3 1/2	4.000 101.6	9.000 228.6	1.190 30.20	5.500 139.7	8	0.880 22.30	7.250 184.1	8.71
4	4.500 114.3	10.00 254.0	1.250 31.70	6.190 157.2	8	0.880 22.30	7.800 200.1	11.5
5	5.563 141.3	11.00 279.4	1.380 35.00	7.310 185.7	8	0.880 22.30	9.250 234.9	15.6
6	6.625 168.3	12.50 317.5	1.440 36.50	8.500 215.9	12	0.880 22.30	10.62 269.7	20.9
8	8.625 219.1	15.00 381.0	1.620 41.10	10.62 269.7	12	1.000 25.40	13.00 330.2	34.3
10	10.75 273.0	17.50 444.5	1.880 47.70	12.75 323.9	16	1.120 28.40	15.25 387.3	53.3
12	12.75 323.8	20.50 520.7	2.000 50.80	15.00 381.0	16	1.250 31.70	17.75 450.8	78.8
14	14.00 355.6	23.00 584.2	2.120 53.80	16.25 412.8	20	1.250 31.70	20.25 514.3	105
16	16.00 406.4	25.50 647.7	2.250 57.15	18.50 469.9	20	1.380 35.00	22.50 571.5	137
18	18.00 457.2	28.00 711.2	2.380 60.45	21.00 533.4	24	1.380 35.00	24.75 628.6	175
20	20.00 508.0	30.50 774.7	2.500 63.50	23.00 584.2	24	1.380 35.00	27.00 685.8	221
24	24.00 609.6	36.00 914.4	2.750 69.85	27.25 692.2	24	1.620 41.10	32.00 812.8	339

Notes

- Weights are based on manufacturer's data and are approximate.
- Flat face flanges may be provided at full thickness, C, or with raised face removed (the latter is nonstandard).