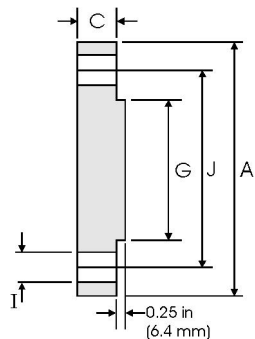
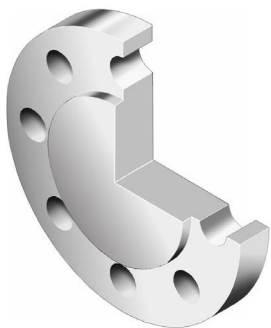


Blind Flanges-ANSI B16.5 Class 2500 lbs



Pipe		Flange Data		Raised Face	Drilling Data			Weight
Nominal Pipe Size		A	C	G	H	I	J	
	Outside Diameter	Overall Diameter	Flange Thickness min	Face Diameter	Number of Holes	Bolt Hole Diameter	Diameter of Circle of Holes	kg/piece
	in mm	in mm	in mm	in mm		in mm	in mm	
1/2	0.840	5.250	1.190	1.380	4	0.880	3.500	2.99
	21.30	133.4	30.20	35.10		22.40	88.90	
3/4	1.050	5.500	1.250	1.690	4	0.880	3.750	3.50
	26.70	139.7	31.70	42.90		22.40	95.30	
1	1.315	6.250	1.380	2.000	4	1.000	4.250	4.96
	33.40	158.8	35.10	50.80		25.40	108.0	
1 1/4	1.660	7.250	1.500	2.500	4	1.120	5.120	7.35
	42.20	184.2	38.10	63.50		28.40	130.0	
1 1/2	1.900	8.000	1.750	2.880	4	1.250	5.750	10.4
	48.30	203.2	44.50	73.15		31.75	146.1	
2	2.375	9.250	2.000	3.620	8	1.120	6.750	15.6
	60.30	235.0	50.80	91.90		28.40	171.5	
2 1/2	2.875	10.50	2.250	4.120	8	1.250	7.750	22.6
	73.00	266.7	57.15	104.6		31.75	196.9	
3	3.500	12.00	2.620	5.000	8	1.380	9.000	34.8
	88.90	304.8	66.55	127.0		35.10	228.6	
4	4.500	14.00	3.000	6.190	8	1.620	10.75	53.9
	114.3	355.6	76.20	157.2		41.10	273.1	
5	5.563	16.50	3.620	7.310	8	1.888	12.75	90.8
	141.3	419.1	91.90	185.7		47.88	323.9	
6	6.625	19.00	4.250	8.500	8	2.120	14.50	141
	168.3	482.6	108.0	215.9		53.80	368.3	
8	8.625	21.75	5.000	10.62	12	2.120	17.25	214
	219.1	552.5	127.0	269.7		53.80	438.2	
10	10.75	26.50	6.500	12.75	12	2.620	21.25	411
	273.0	673.1	165.1	323.9		66.55	539.8	
12	12.75	30.00	7.250	15.00	12	2.880	24.38	592
	323.8	762.0	184.2	381.0		73.15	619.3	

Notes

- Weights are based on manufacturer's data and are approximate.