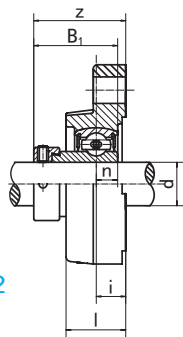


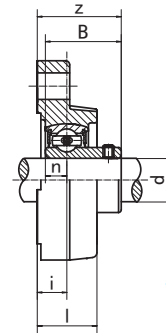
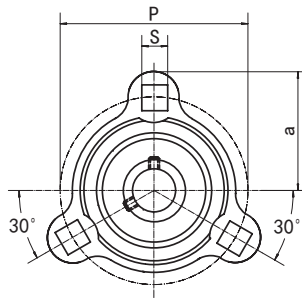
SAFCT2
(SA2-Fitted)

Flange Unit
(Light duty)

SBFCT2
(SB2-Fitted)



SAFCT2



SBFCT2

Unit NO.	Dimensions (mm / in.)									Bolt Size mm/in.	Bearing No.	Housing No.	Weight (kg)										
	d	a	p	i	l	s	z	B ₁	n														
SAFCT 201 201-8	12 1/2	40.5	63.5	9.8	17.5	7.2	31.9	28.6	6.5	1/4	SA201 SA201-8	FCT201	0.26										
SAFCT 202 202-9 202-10	15 9/16 5/8													1-19/32	2-1/2	25/64	11/16	9/32	1-1/4	1.1260	0.2559	SA202 SA202-9 SA202-10	FCT202
SAFCT 203 203-11	17 11/16																						
SAFCT 204 204-12	20 3/4	45.3	71.5	11	20	8.7	34.5	31	7.5	5/16	SA204 SA204-12	FCT204	0.34										
SAFCT 205 205-13 205-14 205-15 205-16	25 13/16 7/8 15/16 1	47.5	76.2	10.3	20	8.7	33.8	31	7.5	5/16	SA205 SA205-13 SA205-14 SA205-15 SA205-16	FCT205	0.43										
SAFCT 206 206-17 206-18 206-19 206-20	30 1-1/16 1-1/8 1-3/16 1-1/4	56.5	90.5	12	22	10.3	38.7	35.7	9					3/8	SA206 SA206-17 SA206-18 SA206-19 SA206-20	FCT206	0.66						
SAFCT 207 207-20 207-21 207-22 207-23	35 1-1/4 1-5/16 1/3/8 1-7/16	61	100	13	24	10.3	42.4	38.9	9.5	3/8	SA207 SA207-20 SA207-21 SA207-22 SA207-23	FCT207	0.94										

Unit NO.	Dimensions (mm / in.)									Bolt Size mm/in.	Bearing No.	Housing No.	Weight (kg)										
	d	a	p	i	l	s	z	B	n														
SBFCT 201 201-8	12 1/2	40.5	63.5	9.8	17.5	7.2	25.8	22	6	1/4	SB201 SB201-8	FCT201	0.21										
SBFCT 202 202-9 202-10	15 9/16 5/8													1-19/32	2-1/2	25/64	11/16	9/32	1-1/64	0.8661	0.2362	SB202 SB202-9 SB202-10	FCT202
SBFCT 203 203-11	17 11/16																						
SBFCT 204 204-12	20 3/4	45.3	71.5	11	20	8.7	29	25	7	5/16	SB204 SB204-12	FCT204	0.32										
SBFCT 205 205-13 205-14 205-15 205-16	25 13/16 7/8 15/16 1	47.5	76.2	10.3	20	8.7	29.8	27	7.5	5/16	SB205 SB205-13 SB205-14 SB205-15 SB205-16	FCT205	0.40										
SBFCT 206 206-17 206-18 206-19 206-20	30 1-1/16 1-1/8 1-3/16 1-1/4	56.5	90.5	12	22	10.3	34	30	8					3/8	SB206 SB206-17 SB206-18 SB206-19 SB206-20	FCT206	0.60						
SBFCT 207 207-20 207-21 207-22 207-23	35 1-1/4 1-5/16 1/3/8 1-7/16	61	100	13	24	10.3	36.5	32	8.5	3/8	SB207 SB207-20 SB207-21 SB207-22 SB207-23	FCT207	0.81										

Note: To specify relubricatable units, add "G" suffix, (e.g., SBFCT205-16G)